

TECHNICAL MANUAL

DIRECT SUPPORT AND GENERAL SUPPORT

MAINTENANCE REPAIR PARTS

AND SPECIAL TOOLS LISTS

(INCLUDING DEPOT MAINTENANCE REPAIR PARTS

AND SPECIAL TOOLS)

COMPRESSOR UNIT, RECIPROCATING,

POWER-DRIVEN, FLAMETHROWER,

3 1/2 CFM, AN-M4D

(FSN 1040-181-5054)

HEADQUARTERS, DEPARTMENT OF THE ARMY

JANUARY 1972

This copy is a reprint which includes current JANUARY 1972 pages from Changes 1 and 2.

Changes in effect: C1 and C 2

CHANGE }
No. 2 }

HEADQUARTERS
DEPARTMENT OF THE ARMY
WASHINGTON, DC, 4 January 1978

**Direct Support and General Support Maintenance
Repair Parts and Special Tools Lists
(Including Depot Maintenance Repair Parts and Special Tools)
COMPRESSOR UNIT, RECIPROCATING, POWER-DRIVEN
FLAMETHROWER, 3 1/2 CFM, AN-M4D
(FSN 4310-181-5054)**

TM 3-1040-263-34P, 11 January 1972, is changed as follows:

Page 34. Delete reference number A2121, mfg code 95138, fig number 2, item number 12.

Add the following:

Reference No.	Mfg Code	Fig No.	Item No.
B68-13-1553	81361	13	3
B81-3-30	81361	13	5

Reference No.	Mfg Code	Fig No.	Item No.
B81-3-65	81361	13	6
B81-6-384	81361	13	8
C81-6-407	81361	13	7
MS28778-4	96906	13	1
MS51528-A4	96906	13	2
2AEF2	95138	13	9

Page 35. Add the following:

21-25 DFM 1-4 CBM 3000	38508	13	4
------------------------	-------	----	---

By Order of the Secretary of the Army:

BERNARD W. ROGERS
General, United States Army
Chief of Staff

Official:

J. C. PENNINGTON
Brigadier General, United States Army
The Adjutant General

Distribution:

To be distributed in accordance with DA Form 12-28, Direct and General Support maintenance requirements for Portable Flamethrower Compressors.

CHANGE }
 NO. 1 }

HEADQUARTERS
 DEPARTMENT OF THE ARMY
 WASHINGTON, DC, 24 September 1976

**Direct Support and General Support Maintenance
 Repair Parts and Special Tools Lists
 (Including Depot Maintenance Repair Parts and Special Tools)
 COMPRESSOR UNIT, RECIPROCATING, POWER-DRIVEN,
 FLAMETHROWER, 3 1/2 CFM, AN-M4D
 (FSN 4310-181-5054)
 Current as of March 1976**

TM 3-1040-263-34P, 11 January 1972, is changed as follows:
 Page 1, Section II, REPAIR PARTS LIST, is superseded as follows:

Group		Page	Illus Figure
100	Canvas.....	5	1
200	Water Separator	5, 6, 7	2 and 3
300	Compressor	7 through 16	4 through 10
400	Engine	16, 17, 18	11
500	Frame and Fuel Tank	18 and 19	12

Page 4. Paragraph 8, is superseded as follows:

**8. Recommendations for Maintenance Publications
 Improvements**

You can improve this manual by recommending improvements using DA Form 2028 (Recommended Changes to Publications and Blank Forms) or a letter, and mailing directly to Commander, Edgewood Arsenal, ATTN: SAREA-DE-ET, Aberdeen Proving Ground, MD 21010. A reply will be furnished direct to you.

Page 5, column (5), line 12. Change "Δ" to "1."

Page 6, column (2), line 3. Change FSN "5330-812-1105" to FSN "5330-246-6403."

Column (5), line 4. Change "3" to "2."

Column (3), lines 14 and 15. Delete all columns relating to "PLUG, ADAPTER, OUTLET A2121 (95138)."

Column (5), line 9. Add "1."

Column (4), line 16. Add "EA."

Page 7, column (5), line 2. Add "1."

Change "GROUP 300 FAN" to read "GROUP 300 COMPRESSOR."

Page 8, column (3), line 3. Change "GROUP 400" to "GROUP 300 - Continued."

Column (1), line 6. Change code "H" to "O."

Page 9, column (3), line 5. Change "GROUP 500 COMPRESSOR" to read "GROUP 300 - Continued."

Column (2), line 1. Change FSN "1650-960-7688" to FSN "1660-960-7688."

Page 10, column (3), last line. Change "41057" to "241057."

Column (10) (a), last line. Change "10" to "9."

Page 12, column (3), line 4. Add "(33525)" after "206507."

Column (3), line 37. Change "HEAT EXCHANGER, AIR" to "INTERCOOLER."

Page 13, column (2), line 1. Change FSN "2995-340-1017" to FSN "4310-340-1017."

Column (2), line 10. Change FSN "1650-699-0522" to FSN "4820-699-0522."

Page 15, column (2), line 10. Change FSN "5330-083-9840" to FSN "5330-983-9840."

Page 16, column (5). Add "1" to first four items.

Column (3), line 17. Change "GROUP 600 ENGINE" to "GROUP 400 ENGINE."

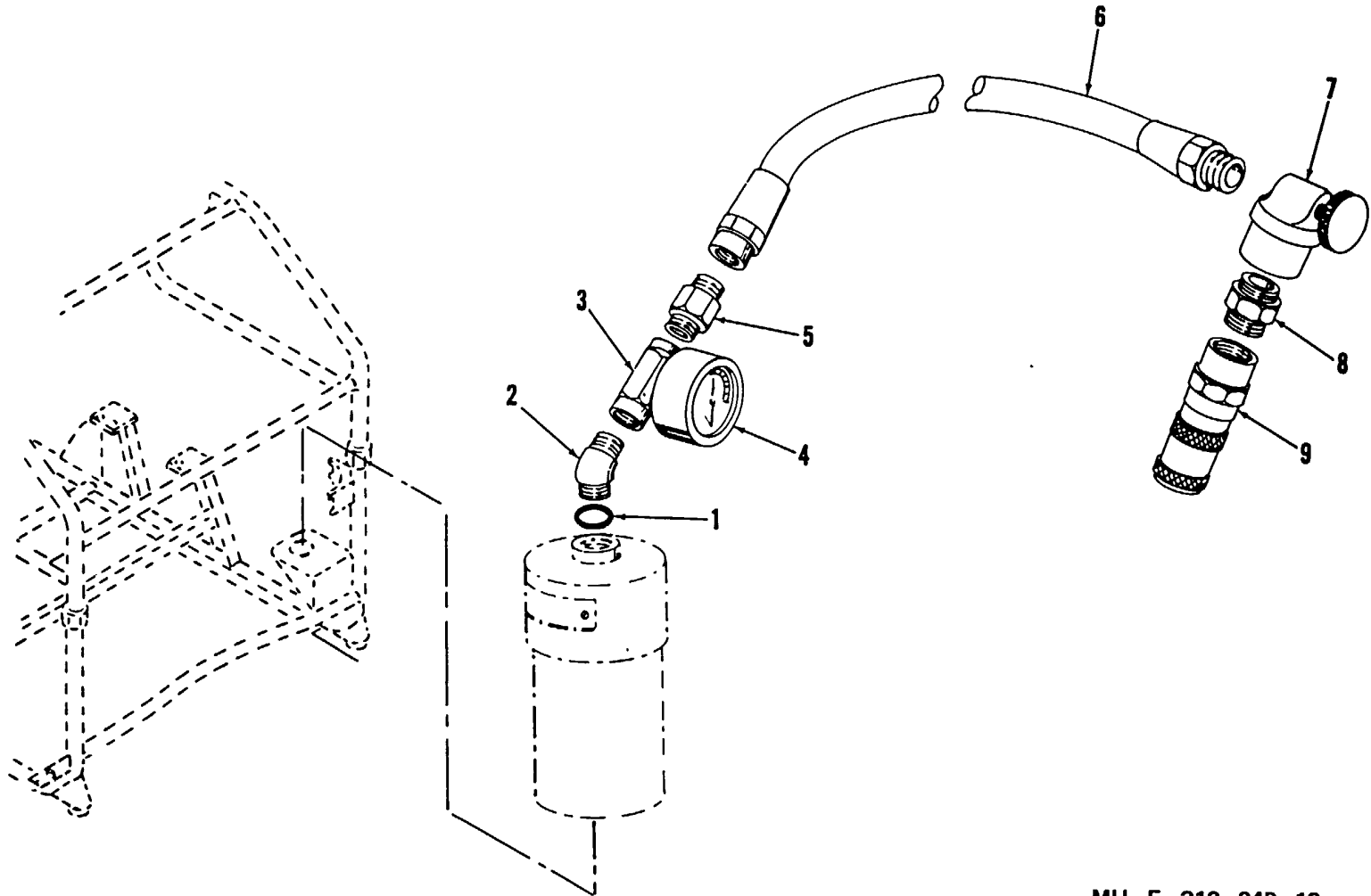
Page 17, column (2), line 2. Change FSN "4730-18G779" to FSN "4730-186-7797."

Page 18, column (3), line 18. Change "GROUP 700 FRAME-FUEL TANK" to "GROUP 500 FRAME-FUEL TANK."

Page 19. Add the following parts to GROUP 500 FRAME AND FUEL TANK.

(1) SMR Code	(2) Federal Stock Number	(3) Description Reference Number & Mfr Code Usable On Code		(4) Unit of meas	(5) Qty inc in unit	(6) 30-day DS maint allowance			(7) 30-DAY GS maint allowance			(8) 1-yr alw per 100 equip cntgcy	(9) Depot maint alw per per equip	(10) Illustration		
						(a)	(b)	(c)	(a)	(b)	(c)			(a) Figure no.	(b) Item no.	
						1-20	21-50	51-100	1-20	21-50	51-100					
		GROUP 500 - Continued														
		CHARGING HOSE														
N	P O	5330-805-2966	PACKING, PREFORMED MS28778-4 (96906)	EA	1	*	*	*	*	*	*	*	*	13	1	
N	P O	4730-933-0723	ELBOW, TUBE TO BOSS MS51528-A4 (96906)	EA	1	*	*	*	*	*	*	*	*	13	2	
N	P O	4730-084-0435	TEE, PIPE TO TUBE B68-13-1553 (81361)	EA	1	*	*	*	*	*	*	*	*	13	3	
N	P O	6685-087-6925	GAGE, PRESSURE DIAL INDICATING 21-25DFM1-4CBM3000 (38508)	EA	1	*	*	*	*	*	*	*	*	13	4	
N	P O	4730-618-3410	ADAPTER, STRAIGHT, PIPE TO TUBE B81-3-30 (81361)	EA	1	*	*	*	*	*	*	*	*	13	5	
N	P O	4720-289-2630	HOSE ASSEMBLY, NONMETALLIC B81-3-65 (81361)	EA	1	*	*	*	*	*	*	*	*	13	6	
N	P O	1040-759-7352	VALVE ASSEMBLY C81-6-407 (81361)	EA	1	*	*	*	*	*	*	*	*	13	7	
N	P O	4730-851-2278	ADAPTER, STRAIGHT, PIPE TO TUBE B81-6-384 (81361)	EA	1	*	*	*	*	*	*	*	*	13	8	
N	P O	4730-863-0774	COUPLING HALF, QUICK DISCONNECT 2AEF2 (95138)	EA	1	*	*	*	*	*	*	*	*	13	9	

Page 21, Figure 2. Delete item 10 and item 12.
Page 31. Add Figure 13.



MU-E-312-34P-13

Figure 13. Charging Hose

Page 32, Section IV, is superseded by the following:

**Section IV INDEX - FEDERAL STOCK NUMBER AND REFERENCE NUMBER
CROSS-REFERENCE TO FIGURE AND ITEM NUMBER**

<u>Stock Number</u>	<u>Figure No.</u>	<u>Item No.</u>	<u>Stock Number</u>	<u>Figure No.</u>	<u>Item No.</u>
1040-021-3910	5	9	1040-403-5650	6	31
1040-062-8574	10	8	1040-403-5651	6	32
1040-083-2606	1	1	1040-408-2351	4	4
1040-083-2607	1	2	1040-408-2354	10	17
1040-083-2608	1	9	1040-408-2357	5	16
1040-083-2614	1	7	1040-408-2362	10	26
1040-083-2615	2	6	1040-408-2363	7	28
1040-083-2617	2	19	1040-408-2364	6	34
1040-084-0436	11	26	1040-408-2365	6	-
1040-084-0438	2	1	1040-408-2366	6	23
1040-151-4119	12	15	1040-408-2367	7	-
1040-169-0351	2	13	1040-408-2368	8	15
1040-169-0352	7	27	1040-408-2369	8	-
1040-237-8250	10	23	1040-408-2370	8	25
1040-403-0808	6	9	1040-408-2371	9	5
1040-403-4729	6	33	1040-408-2372	10	-
1040-403-5638	5	1	1040-408-2373	9	4
1040-403-5639	5	14	1040-408-2374	10	12
1040-403-5646	10	21	1040-408-2375	11	-
1040-403-5649	6	8	1040-482-8063	2	20
	7	1			
			1040-491-9539	5	8

**Section IV INDEX - FEDERAL STOCK NUMBER AND REFERENCE NUMBER
CROSS-REFERENCE TO FIGURE AND ITEM NUMBER**

<u>Stock Number</u>	<u>Figure</u> <u>No.</u>	<u>Item</u> <u>No.</u>	<u>Stock Number</u>	<u>Figure</u> <u>No.</u>	<u>Item</u> <u>No.</u>
1040-759-7352	13	7	2910-083-2620	2	2
1040-863-7451	1	4	2910-912-9485	12	16
1040-921-5291	12	19	2990-972-2318	11	6
1040-921-5298	12	22	2995-237-5653	10	2
1040-971-4920	11	1	3020-971-1365	10	7
1040-971-4921	11	3	3110-971-1366	11	8
1040-972-2323	3	-	4010-958-0633	12	11
1040-976-8980	12	13	4020-233-6555	1	8
1650-328-3730	6	11	4030-063-3979	12	12
	7	4	4030-956-6126	12	10
1650-337-5274	6	30			
			4310-340-1017	8	4
1650-348-2135	4	7			
			4310-400-1301	6	26
1650-507-5449	6	14			
	8	7	4310-421-1477	8	1
			4310-435-2405	7	2
1650-515-2095	5	2			
			4310-513-8259	6	19
1650-546-3426	7	9			
1650-547-0397	8	21	4310-605-0259	6	22
1650-561-5437	7	15	4720-289-2630	13	6
1650-953-0842	7	20	4730-084-0435	13	3
	8	11			
			4730-186-9961	7	14
1660-960-7688	6	5			
			4730-203-3132	2	5
2805-068-7510	11	11			
			4730-231-3026	2	7

**Section IV INDEX - FEDERAL STOCK NUMBER AND REFERENCE NUMBER
CROSS-REFERENCE TO FIGURE AND ITEM NUMBER**

<u>Stock Number</u>	Figure <u>No.</u>	Item <u>No.</u>	<u>Stock Number</u>	Figure <u>No.</u>	Item <u>No.</u>
4730-277-6372	2	8	5305-468-4280	5	13
4730-278-5006	5	10	5305-468-4291	8	9
4730-331-4950	8	2	5305-468-4293	7	21
4730-540-2577	11	15	5305-472-1537	10	15
4730-605-0281	6	20	5305-939-9190	11	7
4730-618-3410	13	5	5305-984-6209	5	5
4730-851-2278	13	8	5305-989-6265	11	31
4730-863-0774	13	9	5305-989-7435	12	9
4730-875-8263	5	11	5305-993-2459	12	23
4730-933-0723	13	2	5306-064-8407	11	2
4820-699-0522	8	16	5306-151-6947	4	6
4820-977-7664	2	11	5306-637-9691	11	24
5305-068-0500	11	5	5306-879-2800	1	3
5305-068-0507	12	1	5307-151-8900	6	16
5305-228-3927	5	4	5310-045-3299	7	16
5305-282-6228	4	1	5310-054-4892	10	25
5305-331-5256	7	22	5310-060-2039	6	6
	8	10		7	7
				8	6
5305-400-5720	6	10			
	7	3	5310-080-6004	4	5
	8	3			
			5310-167-0822	5	12
5305-405-2553	9	6			

**Section IV INDEX - FEDERAL STOCK NUMBER AND REFERENCE NUMBER
CROSS-REFERENCE TO FIGURE AND ITEM NUMBER**

<u>Stock Number</u>	<u>Figure No.</u>	<u>Item No.</u>	<u>Stock Number</u>	<u>Figure No.</u>	<u>Item No.</u>
5310-167-0834	5	7	5310-807-1474	6	12
	10	16			
			5310-809-8546	12	7
5310-167-0836	10	24			
			5310-833-2080	11	28
5310-168-2886	6	15			
			5310-877-5796	12	5
5310-168-2887	4	3			
			5310-880-5977	1	5
5310-194-0637	12	25			
			5310-902-6676	12	6
5310-208-5769	5	15			
			5310-934-9765	11	10
5310-209-0786	11	4			
			5310-982-4988	1	6
5310-275-3683	2	18		12	26
5310-282-7834	2	3	5310-999-0397	12	20
5310-285-7036	5	6	5330-081-3986	2	17
	8	8			
			5330-171-5099	2	16
5310-468-4290	6	13			
			5330-246-6403	2	9
5310-471-3072	5	3			
			5330-263-8030	11	27
5310-515-8059	4	2			
			5330-263-8031	12	4
5310-543-5933	11	9			
			5330-265-1075	12	14
5310-576-5752	11	29			
			5330-524-0730	10	14
5310-616-3056	2	4			
			5330-531-3021	7	10
5310-619-1044	3	7		8	18
5310-619-1148	6	17	5330-576-9925	10	18
5310-655-6054	7	5	5330-584-0150	10	22

**Section IV INDEX - FEDERAL STOCK NUMBER AND REFERENCE NUMBER
CROSS-REFERENCE TO FIGURE AND ITEM NUMBER**

<u>Stock Number</u>	Figure	Item	<u>Stock Number</u>	Figure	Item
	<u>No.</u>	<u>No.</u>		<u>No.</u>	<u>No.</u>
5330-605-0280	6	21	5340-680-0559	6	18
5330-805-2966	13	1	5340-977-7247	12	24
5330-983-9840	2	10	5365-287-0094	10	19
	10	20			
			5365-289-3070	12	3
5340-079-7837	11	30			
			6685-087-6925	13	4
5340-282-8335	12	18			
			9905-436-7499	12	17
5340-565-0004	6	7			
	7	6			
	8	5			
5340-597-9408	12	8			

By Order of the Secretary of the Army:

Official:

FRED C. WEYAND
General, United States Army
Chief of Staff

PAUL T. SMITH
Major General, United States Army
The Adjutant General

DISTRIBUTION:

To be distributed in accordance with DA Form 12-28, Direct and General Support maintenance requirements for Flamethrowers, Service Unit Compressors.

TECHNICAL MANUAL }
No. 3.1040.263-34P }

HEADQUARTERS
DEPARTMENT OF THE ARMY
WASHINGTON, D.C., 11 January 1972

Direct Support and General Support Maintenance

Repair Parts and Special Tools Lists

(Including Depot Maintenance Repair Parts and Special Tools)

COMPRESSOR UNIT, RECIPROCATING, POWER-DRIVEN,

FLAMETHROWER, 3 1/2 CFM, AN-M4D

Current as of 2 June 1971

Section		Paragraph	Page
I.	INTRODUCTION		
	Scope	1	2
	General	2	2
	Explanation of Columns	3	2
	Special Information	4	3
	How to Locate Repair Parts.....	5	4
	Abbreviations.....	6	4
	Federal Supply Codes	7	4
	Reporting of equipment publication improvements	8	4
II.	REPAIR PARTS LIST	Page	Illus Figure
	Group 100 Canvas	5	1
	Group 200 Water Separator	5, 6, 7	2 and 3
	Group 300 Compressor	7 through 16	4 through 10
	Group 400 Engine.....	16, 17, 18	11
	Group 500 Frame and Fuel Tank	18 and 19	12
III.	SPECIAL TOOLS, TEST AND SUPPORT EQUIPMENT LIST		Page
	Group 800-Tools and Equipment		Not Applicable
IV.	FEDERAL STOCK NUMBER AND REFERENCE NUMBER INDEX.....		32

**SECTION I
INTRODUCTION**

1. Scope

This manual lists repair parts required for the performance of direct support and general support maintenance of the Compressor, Reciprocating, Power-Driven, Flamethrower, 3 1/2 CFM, AN-M4D.

2. General

This Repair Parts and Special Tools List is divided into the following sections:

a. *Repair Parts List - Section II.* A list of repair parts authorized for the performance of maintenance at the direct support and general support level in figure and item number sequence.

b. *Special Tools. Test and Support Equipment List - Section III* Not applicable.

c. *Federal Stock Number and Reference Number Index - Section IV.* A list of Federal stock numbers in ascending numerical sequence followed by a list of reference numbers in ascending alpha-numeric sequence, cross-referenced to the illustration figure number and item number

3. Explanation of Columns

The following provides an explanation of columns in the tabular lists in section II, III, and IV:

a. *Source, Maintenance, and Recoverability Codes (SMR) Column 1.*

(1) Source code indicates the selection status and source for the listed item. Source codes used are-

<i>Code</i>	<i>Explanation</i>
P	Repair parts, special tools, and test equipment supplied from the GSA/DSA, or Army supply system, and authorized for use at indicated maintenance categories.
P2	Repair parts, special tools, and test equipment which are procured and stocked for insurance purposes because the combat or military essentiality of the end item dictates that a minimum quantity be available in the supply system
P9	Assigned to items which are NSA design controlled: unique repair parts, special tools, test, measuring, and diagnostic equipment, which are stocked and supplied by the Army COMSEC Logistic System and which are not subject to the provisions of AR 380-41.
P10	Assigned to items which are NSA design controlled: special tools, test, measuring, and diagnostic equipment for COMSEC support, which are accountable under the provisions of AR 380-41, and which are stocked and supplied by the Army COMSEC Logistic System.

<i>Code</i>	<i>Explanation</i>
M	Repair parts, special tools, and test equipment which are not procured or stocked. as such, in the supply system but are to be manufactured at indicated maintenance levels.
A	Assemblies which are not procured or stocked as such, but are made up of two or more units. Such component units carry individual stock numbers and descriptions. are procured and stocked separately, and can be assembled to form the required assembly at indicated maintenance categories.
X	Parts and assemblies that are not procured or stocked because the failure rate is normal below that of the applicable end item or component. The failure of such part or assembly should result in retirement of the end item from the supply s) stem.
X1	Repair parts which are not procured or stocked. The requirement for such item will be filled by the next higher assembly or component.
X2	Repair parts. special tools, and test equipment which are not stocked and have no foreseen mortality. The indicated maintenance category requiring such repair parts will attempt to obtain the parts through cannibalization or salvage. The item may be requisitioned, with exception data, from the end item manager for immediate use.
G	Major assemblies that are procured with PEMA funds for initial issue only as exchange assemblies at direct support and general support level. These assemblies will not be stocked above the direct support and general support level or returned to depot supply level.

NOTE

Cannibalization or salvage may be used as a source of supply for any items source coded above except those coded X1.

(2) Maintenance code, indicates the lowest category of maintenance authorized to install the listed item. The maintenance level codes are-

<i>Code</i>	<i>Explanation</i>
C	Crew or operator
O	Organizational maintenance
F	Direct support maintenance
H	General support maintenance
D	Depot maintenance

(3) Recoverability code, indicates whether unserviceable items should be returned for recovery or salvage. Items not coded are expendable. Recoverability codes are-

<i>Code</i>	<i>Explanation</i>
R	Applied to repair parts, (assemblies and components), special tools, and test equipment which are considered economically repairable at direct and general support maintenance levels. When the Item is no longer economically repairable, It is normally disposed of at the general support level. When supply considerations dictate, some of these repair parts may be listed for automatic return to supply for depot level repair as set forth in AR 710-1. When so listed, they will be replaced by supply on an exchange basis.
S	Repair parts, special tools, test equipment, and assemblies which are economically repairable at DSU and GSU activities and which normally are furnished by supply on an exchange basis. When items are determined by a GSU to be uneconomically repairable, they will be evacuated to a depot for evaluation and analysis before final disposition.
T	Higher dollar value recoverable repair parts, special tools, and test equipment which are subject to special handling and are issued on an exchange basis. Such items will be repaired or overhauled at depot maintenance activities only. No repair may be accomplished at lower levels.
U	Repair parts, special tools, and test equipment specifically selected for salvage by reclamation units because of precious metal content, critical materials, high dollar value, or reusable casings or castings.
	<i>b. Federal Stock Number, Column 2.</i> This column indicates the Federal stock number assigned to the item and will be used for requisitioning purposes.
	<i>c. Description, Column 3.</i> This column indicates the Federal item and any additional description of the item required. A part number or other reference number is followed by the applicable five-digit Federal supply code for manufacturers in parentheses. Repair parts quantities included in the kits, nets, and assemblies are shown in front of the repair part name.
	<i>d. Unit of Measure (U/M), Column 4.</i> A 2 character alphabetic abbreviation indicating the amount or quantity of the item upon which the allowances are based; e.g., ea, pr, it, yd, etc.
	<i>e. Quantity Incorporated in Unit Column, Column 5</i> This column indicates the quantity of the item used in the functional group. A "V" appearing in this column in lieu of a quantity indicates that a definite quantity cannot be indicated (e.g. shims, spacers, etc.).
	<i>f. 30-Day DS/GS Maintenance Allowances, Columns 6 and 7.</i>

NOTE

Allowances in GS column are for GS maintenance only.

(1) The allowance columns are divided into three subcolumns. Indicated in each subcolumn, opposite the first appearance of each item, is the total quantity of items authorized for the number of equipments supported. Subsequent appearances of the same item will have the letters "REF" in the applicable allowance columns. Items authorized for use as required but not for initial stockage are identified with an asterisk in the allowance column.

(2) The quantitative allowances for DS/GS levels of maintenance will represent initial stockage for a 30-day period for the number of equipments supported.

(3) Determination of the total quantity of parts required for maintenance of more than 100 of these equipments can be accomplished by converting the equipment quantity to a decimal factor by placing a decimal point before the next to last digit of the number to indicate hundredths, and multiplying the decimal factor by the parts quantity authorized in the 51-100 allowance column. Example, authorized allowance for 51-100 equipments is 40; for 150 equipments multiply 40 by 1.50 or 60 parts required.

g. 1-Year Allowance Per 100 Equipments/Contingency Planning Purposes, Column 8. This column indicates opposite the first appearance of each item the total quantity required for distribution and contingency planning purposes. The range of items indicates total quantities of all authorized items required to provide fur adequate support of 100 equipments for 1 year.

h. Illustration, Column 10. This column is divided as follows:

(1) *Figure Number, Column 10a.* Indicates the figure number of the illustration it, which the item is shown.

(2) *Item Number. Column 10b.* Indicates the callout number used to reference the item is the illustration.

4. Special Information

a. The following publications pertain to AN-M4D Flamethrower Compressor and its components:

LO 3-1040-263-12	Lubrication Order
TM 3-1040-263-12	Operator's and Organizational Maintenance Manual
TM 3-1040-263-20P	Organizational Maintenance Repair Parts and Special Tools List
TM 3-1040-263-34	Direct Support and General Support Maintenance Manual

b. Parts which require manufacture or assembly at a category higher than that authorized for installation will indicate in the source column the higher category.

5. How to Locate Repair Parts

a. When Federal stock number or reference number is unknown:

(1) *First.* Using the table of contents, determine the functional group or subgroup; i.e., canvas group, compressor group, within which the repair part belongs. This is necessary since illustrations are prepared for functional groups or subgroups, and listings are divided into the same groups.

(2) *Second.* Find the illustration covering the functional group or subgroup to which the repair part belongs.

(3) *Third.* Identify the repair part on the illustration and note the illustration figure and item number of the repair part.

(4) *Fourth.* Using the repair parts listing, find the functional group or subgroup of the repair part and locate the illustration figure and item number of the repair part.

b. When Federal stock number or reference number is known:

(1) *First.* Using the Index of Federal Stock Numbers and Reference Numbers, find the pertinent FSN or reference number. This index is in ascending FSN sequence followed by a list of reference numbers in ascending alpha-numeric sequence, cross-referenced to the illustration figure number and item number.

(2) *Second.* Using the repair part listing, find the functional group or subgroup of the repair part and the illustration figure and item number as noted in the Index of Federal Stock Numbers and Reference Numbers.

6. Abbreviations

<i>Abbreviation</i>	<i>Explanation</i>
cre	corrosion resistant
lg	long
c'shaft	crankshaft

7. Federal Supply Codes

<i>Federal supply codes</i>	<i>Manufacturers</i>
10001	Bureau of Naval Weapons
33525	Walter Kidde & Company, Inc., Belleville, N.J.
81361	Edgewood Arsenal, Edgewood Arsenal, Md. 21010
88044	Aeronautical Standards Group, Dept. of Navy and Air Force, Washington, D.C.
96906	Military Standards
97403	Engineer Research & Dev. Laboratory, Fort Belvoir, Va.

8. Recommendations for Maintenance Publications Improvements

You can improve this manual by recommending improvements using DA Form 2028 (Recommended Changes to Publications and Blank Forms) or a letter, and mailing directly to Commander, Edgewood Arsenal, ATTN: SAREA-DE-ET, Aberdeen Proving Ground, MD 21010. A reply will be furnished direct to you.

SECTION II. REPAIR PARTS LIST

(1) SMR Code	(2) Federal Stock Number	(3) Description Reference Number & Mfr Code Usable On Code		(4) Unit of meas	(5) Qty inc in unit	(6) 30-day DS maint allowance			(7) 30-DAY GS maint allowance			(8) 1-yr alw per 100 equip cntgcy	(9) Depot maint alw per 100 equip	(10) Illustration	
						(a)	(b)	(c)	(a)	(b)	(c)			(a) Figure no.	(b) Item no.
						1-20	21-50	51-100	1-20	21-50	51-100				
GROUP 100 Canvas															
P—C—	1040-083-2606	COVER, COMPRESSOR D68-13-1551 (81361)		EA	1	3	6	11	*	*	*	100		1	1
P—O—	1040-083-2607	STRAP ASSEMBLY, RIGHT SHOULDER D81-1-6869-1 (81361)		EA	1	3	6	11	*	*	*	100		1	2
P—O—	5306-879-2800	BOLT, SHOULDER B81-1-6878 (81361)		EA	2	*	*	*	*	*	*	2		1	3
P—O—	1040-863-7451	STRAP ASSEMBLY, WAIST D81-1-6876 (81361)		EA	1	3	6	11	*	*	*	100		1	4
P—O—	5310-880-5977	WASHER CRES. 5/16 IN. ID. 47/64 IN. OD, 0.062 IN. THK. MS15795-811 (96906)		EA	2	*	*	*	*	*	*	2		1	5
P—O—	5310-982-4988	NUT, SELF-LOCKING CRES, 1/4-28 THD MS21045-C4 (96906)		EA	2	*	*	*	*	*	*	2		1	6
P—C—	1040-083-2614	HARNES, BACK REST D68-13-1570 (81361)		EA	1	3	6	11	*	*	*	100		1	7
P—C—	4020-233-6555	CORD, COTTON 1/8 DIA IN. 30 MIL-C-2533A (81349)		EA	1	*	*	*	*	*	*	2		1	8
P—O—	1040-083-2608	STRAP ASSEMBLY, SHOULDER, LEFT D81-1-6872-1 (81361)		EA	1	3	6	11	*	*	*	100		1	9
GROUP 200 WATER SEPARATOR ASSY.															
P—F—	1040-084-0438	FITTING, SPRAY B68-13-1567 (81361)		EA	1	*	*	*	*	*	*	2		2	1
P—F—	2910-083-2620	VALVE, NEEDLE 213347 (33525)		EA	1	1	1	*	*	*	*	15		2	2
P—F—	5310-282-7834	NUT, PLAIN HEXAGON BULKHEAD AND UNIVERSAL FITTING ALUM, 5/8 OD TUBE SIZE, 7/8-14 THD AN924-10D (88044)		EA	1	*	*	*	*	*	*	2		2	3
P—F—	5310-616-3056	WASHER, LOCK, FLAT-EXTERNAL TOOTH STL. 7/8 IN. ID, 1-3/8 OD, 0.056 IN. THK. MS35335-41 (96906)		EA	1	*	*	*	*	*	*	2		2	4
P—F—	4730-203-3132	CLAMP, HOSE, AIRCRAFT CRES AN737-TW98-114 (88044)		EA	1	*	*	*	*	*	*	2		2	5
P—F—	1040-083-2615	SEPARATOR ASSEMBLY, WATER D68-13-1545 (81361)		EA	1	1	1	1	*	*	*	2		2	6

(1) SMR Code	(2) Federal Stock Number	(3) Description Reference Number & Mfr Code Usable On Code		(4) Unit of meas	(5) Qty inc in unit	(6) 30-day DS maint allowance			(7) 30-DAY GS maint allowance			(8) 1-yr alw per 100 equip cntgcy	(9) Depot maint alw per 100 equip	(10) Illustration	
						(a)	(b)	(c)	(a)	(b)	(c)			(a) Figure no.	(b) Item no.
						1-20	21-50	51-100	1-20	21-50	51-100				
P—F—	4730-231-3026	ELBOW TUBE UNIVERSAL, 90° STL, 1/4 OD TUBE SIZE 7/16-20 THD		EA	1	*	*	*	*	*	*	2		2	7
P—F—	4730-277-6372	LOCKNUT, TUBE FITTING STL., 1/4 OD TUBE SIZE, 7/16-20 THD		EA	1	*	*	*	*	*	*	2		2	8
P—F—	5330-246-6403	RETAINER, PACKING BACK-UP STRAIGHT THREAD TUBE FITTING BOSS TEFLON		EA	1	*	*	*	*	*	*	2		2	9
P—F—	5330-983-9840	PACKING, PREFORMED 5304-0400 (33525)		EA	2	2	3	6	*	*	*	50		2	10
P—F—R	4820-977-7664	VALVE, RELIEF 873738-2550 (33525)		EA	1	2	3	6	*	*	*	50		2	11
P—H—	1040-169-0351	CAP, TANK 279806 (33525)		EA	1				*	*	*	2		2	13
X2 H—		SCREW, SELF-TAPPING 1818-0203 (33525)		EA	2									2	14
X2 H—		NAMEPLATE, SEPARATOR 256776 (33525)		EA	1									2	15
P—H—	5330-171-5099	RETAINER, PACKING MS28783-6 (96906)		EA	1				1	1	2	15		2	16
P—H—	5330-081-3986	PACKING, PREFORMED 5303-0600 (33525)		EA	1				2	3	6	50		2	17
P—H—	5310-275-3683	WASHER, LOCK, FLAT-EXTERNAL TOOTH STL, 3/4 IN. ID, 1-1/4 IN. OD. 0.5051 IN. THK. MS35335-40 (96906)		EA	1				*	*	*	2		2	18
P—H—	1040-083-2617	BAFFLE, MACHINED 2772277 (33525)		EA	1				*	*	8	2		2	19
P—H—	1040-482-8063	SHELL, WATER SEPARATOR 279805 (33525)		EA	1				*	*	*	2		2	20
X2 H—		CAP, RELIEF VALVE 208289 (33525)		EA	1									3	1
X1 H—		1 EA-SPRING, MAIN 208298							See FSN 1040-972-2323					3	2
X1 H—		RETAINER, SPRING 244719 (33525)		EA	1									3	3
X1 H—		BALL 31515 (33525)		EA	1									3	4
X1 H—		PISTON 244724 (33525)		EA	1									3	5
X1 H—		1 EA PACKING, PREFORMED 5302-0100							See FSN 1040-972-2323					3	6

(1) SMR Code	(2) Federal Stock Number	(3) Description Reference Number & Mfr Code Usable On Code			(4) Unit of meas	(5) Qty inc in unit	(6) 30-day DS maint allowance			(7) 30-DAY GS maint allowance			(8) 1-yr alw per 100 equip cntgcy	(9) Depot maint alw per 100 equip	(10) Illustration	
							(a)	(b)	(c)	(a)	(b)	(c)			(a) Figure no.	(b) Item no.
							1-20	21-50	51-100	1-20	21-50	51-100				
P—H—	5310-619-1044	NUT, RELIEF VALVE 208292 (33525)			EA	1				*	*	*	2		3	7
X1 H—		BODY, RELIEF VALVE 247661 (33525)													3	8
X2 H—		NAMEPLATE RELIEF VALVE 244752 (33525)			EA	1									3	9
X1 H—		1 EA-SEAT, RELIEF VALVE 208290					See FSN 1040-972-2323								3	10
X1 H—		1 EA-SPRING, SEAT 211730					See FSN 1040-972-2323								3	11
X1 H—		1 EA-PACKING, PREFORMED 5302-0900					See FSN 1040-972-2323								3	12
X1 H—		FITTING, RELIEF VALVE 208287 (33525)					See FSN 1040-972-2323								3	13
X1 H—		1 EA-SEAL, LOCKWIRE 211793					See FSN 1040-972-2323								3	14
X1 H—		1 EA-LOCKWIRE CRES 0.032 IN. OD MS20995C32					See FSN 1040-972-2323								3	15
P—H—	1040-972-2323	REPAIR KIT, RELIEF VALVE, WATER SEPARATOR 803842 (33525)			EA	1				1	3	5	40			
		COMPOSED OF: 1 SPRING, 208298													3	2
		1 PACKING, 5302-0100													3	6
		1 SEAT, 208290													3	10
		1 SPRING, SEAT, 211730													3	11
		1 PACKING, 5302-0900													3	12
		1 SEAL, 211793													3	14
		1 LOCKWIRE, MS20995C32													3	15
P—H—	5305-282-6228	GROUP 300 COMPRESSOR SCREW, MACHINE, FILLISTER HEAD CRES, 8-32 THD, 1/2 N. LONG 1563-0808 (33525)			EA	4				*	*	*	2		4	1
P—H—	5310-515-8058	WASHER, FLAT STL, 0.174 IN. ID, 3 / 8 IN. OD, 0.032 IN. THK. AN960-8 (88044)			EA	4				*	*	*	2		4	2
P—H—	5310-168-2887	WASHER, BACK-UP 257010 (33525)			EA	1				*	*	*			4	3
P—H—	1040-408-2351	FAN 279803 (33525)			EA	1				*	1	1	5		4	4
P—H—	5310-080-6004	WASHER, FLAT MS27183-14 (96906)			EA	1				*	*	*	2		4	5
P—H—	5306-151-6947	BOLT, MACHINE 257051 (33525)			EA	1				*	*	*	2		4	6

(1) SMR Code	(2) Federal Stock Number	(3) Description Reference Number & Mfr Code Usable On Code		(4) Unit of meas	(5) Qty inc in unit	(6) 30-day DS maint allowance			(7) 30-DAY GS maint allowance			(8) 1-yr alw per 100 equip cntgcy	(9) Depot maint alw per 100 equip	(10) Illustration	
						(a)	(b)	(c)	(a)	(b)	(c)			(a) Figure no.	(b) Item no.
						1-20	21-50	51-100	1-20	21-50	51-100				
P—H—	1650-348-2135	GUARD, FAN 801487 (33525)		EA	1				*	*	*	2		4	7
		GROUP 300 - Continued													
P—H—	1040-403-5638	TUBE, SUPPLY 895477 (33525)		EA	1				*	*	*	2		5	1
P—H—	1650-515-2095	BRACKET, ANGLE 204728 (33525)		EA	3				*	1	1	5		5	2
P—H—	5310-471-3072	WASHER, FLAT 247317 (33525)		EA	4				*	*	*	2		5	3
P—H—	5305-228-3927	SCREW-PUMP 206898 (33525)		EA	4				*	*	*	2		5	4
P—O—	5305-984-6209	SCREW, MACHINE 10-24 x 1/2 lg MS35206-262 (96906)		EA	1	*	1	1	*	*	*	5		5	5
P—H—	5310-285-7036	WASHER, LOCK STL. 0.200 IN. ID, 0.323 IN. OD, 0-043 IN. THK. MS122055 (96906)		EA	3				*	*	*	2		5	6
P—H—	5310-167-0834	WASHER, FLAT STL, 0.203 IN. ID, 3 / 8 IN. OD, 0.032 IN. THK AN960-10L (88044)		EA	5				*	*	*	2		5	7
P—H—	1040-491-9539	BRACKET, FAN GUARD 244342 (33525)		EA	1				*	1	1	5		5	8
P—H—	1040-021-3910	OIL PUMP ASSEMBLY 896158 (33525)		EA	1				1	1	1	5		5	9
P—H—	4730-278-5006	CAP ASSEMBLY, PRESSURE SEAL FLARED TUBE FITTING ALUM, 1/4 OD TUBE SIZE. 7/16-20 THD AN929-4D (88044)		EA	1				*	*	*	2		5	10
P—H—	4730-875-8263	ELBOW, TUBE UNIVERSAL 90° CRES, 1/4 OD TUBE SIZE, 7/16-20 THD AN833-4J (88044)		EA	1				*	*	*	2		5	11
P—H—	5310-167-0822	WASHER, FLAT STL, 0.453 IN. ID, 3/4 IN. OD 0.063 IN. THK. AN960-716 (88044)		EA	2				*	*	*	2		5	12
P—H—	5305-468-4280	SCREW-CAP SOCKET HEAD 5833-1110 (33525)		EA	2				*	*	*	2		5	13
P—H—	1040-403-5639	BRACKET, AFTERCOOLER 256728 (33525)		EA	1				*	*	*	2		5	14
P—H—	5310-208-5769	NUT, PLAIN, HEXAGON CRES, 1/4 OD TUBE SIZE, 7/16-20 THD AN924-4 (88044)		EA	1				*	*	*	2		5	15
P—H—	1040-408-2357	AFTERCOOLER 895476 (33525)		EA	1				*	*	*	2		5	16
A—H—		COMPRESSOR, BASIC 895459 (33525)		EA	1									5	17

(1) SMR Code	(2) Federal Stock Number	(3) Description Reference Number & Mfr Code Usable On Code		(4) Unit of meas	(5) Qty inc in unit	(6) 30-day DS maint allowance			(7) 30-DAY GS maint allowance			(8) 1-yr alw per 100 equip cntgcy	(9) Depot maint alw per 100 equip	(10) Illustration	
						(a)	(b)	(c)	(a)	(b)	(c)			(a) Figure no.	(b) Item no.
						1-20	21-50	51-100	1-20	21-50	51-100				
X2 H		NAMEPLATE, COMPRESSOR 218033 (33525)		EA	1									5	18
X2 H		SCREW, DRIVE STL, NO. 0,0.125 IN. LONG TYPE U MS 21318-7 (96906)		EA	2									5	19
GROUP 300 - Continued															
X1 H —		4 EA.-SHIM, 0.010 255080				See FSN 1040-408-2365								6	1
X1 H —		1 EA.-SHIM, 0.005 255079				See FSN 1040-408-2365								6	2
X1 H —		1 EA.-SHIM, 0.003 255078				See FSN 1040-408-2365								6	3
X1 H —		1 EA.-PACKING, PREFORMED 5303-1000				See FSN 1040-408-2365								6	4
P—H—	1660-960-7688	HEAT EXCHANGER, AIR 873481 (33525)		EA	1				*	*	*	2		6	5
P—F—	5310-060-2039	NUT, SELF-LOCKING ALUM, 8-32 THD MS21044D08 (96906)		EA	7	*	*	*	*	*	*	2		6	6
P—F—	5340-565-0004	CLAMP, LOOP MS21919DG-10 (96906)		EA	11	*	*	*	*	*	*	2		6	7
P—H—	1040-403-5649	ELBOW 17309 (33525)		EA	2				*	*	*	2		6	8
P—H—	1040-403-0808	BRACKET, INTERCOOLER 213072 (33525)		EA	1				*	1	1	5		6	9
P—F—	5305-400-5720	SCREW, MACHINE, FILLISTER HEAD CRES, 8-32 THD, 5/8 IN. LONG 1563-0810 (33525)		EA	7	*	*	*	*	*	*	2		6	10
P—H—	1650-328-3730	BRACKET, INTERCOOLER 206871 (33525)		EA	1				*	*	*	2		6	11
P—H—	5310-807-1474	NUT, SELF-LOCKING STL, 10-32 THD MS21042-L3 (96906)		EA	6				*	*	*	2		6	12
P—H—	5310-468-4290	WASHER, FLAT 5386-0001 (33525)		EA	6				*	*	*	2		6	13
P—H—	1650-507-5449	BRACKET, INTERCOOLER 207799 (33525)		EA	2				*	*	*	2		6	14
P—C—	5310-168-2886	NUT, WING 5046-1100 (33525)		EA	1	*	*	*	*	*	*	2		6	15
P—C—	5305-958-0585	STUD 257106 (33525)		EA	1	*	*	*	*	*	*	2		6	16
P—C—	5310-619-1148	WASHER, FLATCRES, 7/32 IN. X 7/16x 0.49 MS15795-808 (96906)		EA	1	*	1	2	*	*	*	10		6	17
P—C—	5340-680-0559	CAP, PROTECTION 204067 (33525)		EA	1	*	1	2	*	*	*	10		6	18

(1) SMR Code	(2) Federal Stock Number	(3) Description Reference Number & Mfr Code Usable On Code	(4) Unit of meas	(5) Qty inc in unit	(6) 30-day DS maint allowance			(7) 30-DAY GS maint allowance			(8) 1-yr alw per 100 equip cntgcy	(9) Depot maint alw per 100 equip	(10) Illustration	
					(a)	(b)	(c)	(a)	(b)	(c)			(a) Figure no.	(b) Item no.
					1-20	21-50	51-100	1-20	21-50	51-100				
P—C—	4310-513-8259	COVER 204066 (33525)	EA	1	*	1	1	*	*	*	5		6	19
P—C—	4730-605-0281	STRAINER 204070 (33525)	EA	1	*	1	1	*	*	*	10		6	20
P—C—	5330-605-0280	GASKET 204068 (33525)	EA	2	2	3	6	*	*	*	50		6	21
P—C—	4310-605-0259	FILTER 204033 (33525)	EA	1	3	6	11	*	*	*	100		6	22
P—H—	1040-408-2366	CYLINDER, 1ST STAGE 292680 (33525)	EA	1				*	*	*	2		6	23
X1—H—		1 EA.-GASKET, PLATE 203644						See FSN 1040-408-2365					6	24
X1—H—		1 EA.-VALVE, INLET 203645						See FSN 1040-408-2365					6	25
P—H—	4310-400-1301	PLATE AND PIN 1ST STAGE 843895 (33525)	EA	1				*	*	*	2		6	26
X1—H—		1 EA.-VALVE, OUTLET 209921						See FSN 1040-408-2365					6	27
X1—H—		1 EA.-GASKET, HEAD 203646						See FSN 1040-408-2365					6	28
X1—H—		1 EA.-SPRING, OUTLET 209922						See FSN 1040-408-2365					6	29
P—H—	1650-337-5274	STOP, VALVE DISC 206540 (33525)	EA	1				*	*	*	2		6	30
P—H—	1040403-5650	STOP, 0.003 IN 255146 (33525)	EA	1				*	*	*	2		6	31
P—H—	1040-403-5651	STOP, 0.005 IN 255147 (33525)	EA	1				*	*	*	2		6	32
P—H—	1040-403-4729	STOP, 0.010 IN 255148 (33525)	EA	1				*	*	*	2		6	33
P—H—	1040-408-2364	HEAD, 1ST STAGE 292190 (33525)	EA	1				*	*	*	2		6	34
P—H—	1040-408-2365	REPAIR KIT, 1ST STAGE 804971 (33525)	EA	1				1	1	1	5			
		COMPOSED OF:												
		4 SHIM, 255080	EA										6	1
		1 SHIM, 255079	EA										6	2
		1 SHIM, 255078	EA										6	3
		1 PACKING, 5303-100	EA										6	4
		1 GASKET, 203644	EA										6	24
		1 VALVE, INLET 203645	EA										6	25
		1 VALVE, OUTLET 209921	EA										6	27
		1 GASKET, HEAD, 203646	EA										6	28
		1 SPRING, OUTLET, 209922	EA										6	29
		4 RING COMPRESSION 241057	EA										9	1

(1) SMR Code	(2) Federal Stock Number	(3) Description Reference Number & Mfr Code Usable On Code		(4) Unit of meas	(5) Qty inc in unit	(6) 30-day DS maint allowance			(7) 30-DAY GS maint allowance			(8) 1-yr alw per 100 equip cntgcy	(9) Depot maint alw per 100 equip	(10) Illustration	
						(a)	(b)	(c)	(a)	(b)	(c)			(a) Figure no.	(b) Item no.
						1-20	21-50	51-100	1-20	21-50	51-100				
P—H—	1040-403-5649	ELBOW 17309 (33525)		EA	2				*	*	*	2		7	1
P—H—	4310-435-2405	HEAT EXCHANGER, AIR 873482 (33525)		EA	2				*	*	*	2		7	2
P—F—	5305-400-5720	SCREW, MACHINE, FILLISTER HEAD CRES, 8-32 THD, 5/8 IN. LONG 1563-0810 (33525)		EA	7	*	*	*	*	*	*	2		7	3
P—H—	1650-328-3730	BRACKET, INTERCOOLER 206871 (33525)		EA	1				REF	REF	REF	REF		7	4
P—H—	5310-655-6054	WASHER, BRACKET 206889 (33525)		EA	1				*	*	*	2		7	5
P—F—	5340-565-1004	CLAMP, LOOP MS21919DG-10 (96906)		EA	11	REF	REF	REF	REF	REF	REF	REF		7	6
P—F—	5310-060-2039	NUT, SELF-LOCKING ALUM, 8-32 THD MS21044D08 (96906)		EA	7	REF	REF	REF	REF	REF	REF	REF		7	7
X1 H—		1 EA.-VALVE, INTAKE 206524				See FSN 1040-408-2367								7	8
P—H—	1650-546-3426	PLATE, VALVE COMPRESSOR 2ND STAGE 241055 (33525)		EA	1				*	*	*	2		7	9
P—H—	5330-531-3021	SEAL, PLATE 206508 (33525)		EA	1				*	*	*	2		7	10
X1 H—		1 EA.-VALVE, DISCHARGE 241898				See FSN 1040-408-2367								7	11
X1 H—		1 EA.-SPRING, DISCHARGE 209923				See FSN 1040-408-2367								7	12
X1 H—		1 EA.-GASKET, PLATE 206511				See FSN 1040-408-2367								7	13
P—H—	4730-186-9961	ELBOW, TUBE 90° ALUM. 1/4 IN. OD TUBE, 1/8 PIPE SIZE MS20822-4D (96906)		EA	1				*	*	*	2		7	14
P—H—	1650-561-5437	HEAD, CYLINDER, COMPRESSOR 2ND STAGE 270558 (33525)		EA	1				*	*	*	2		7	15
P—H—	5310-045-3299	WASHER, LOCK STL. 0.173 IN. ID, 0.280 IN. OD. 0.034 IN THK. MS35338-42 (96906)		EA	6				*	*	*	2		7	16
X1 H—		1 EA.-SPACER, 0.003 IN 254956				See FSN 1040-408-2367								7	17
X1 H—		1 EA.-SPACER, 0.005 IN 25 4957				See FSN 1040-408-2367								7	18
X1 H—		2 EA.-SPACER, 0.010 IN 254958				See FSN 1040-408-2367								7	19
P—H—	1650-953-0842	STOP, VALVE 242842 (33525)		EA	1				*	*	*	2		7	20

(1) SMR Code	(2) Federal Stock Number	(3) Description Reference Number & Mfr Code Usable On Code		(4) Unit of meas	(5) Qty inc in unit	(6) 30-day DS maint allowance			(7) 30-DAY GS maint allowance			(8) 1-yr alw per 100 equip cntgcy	(9) Depot maint alw per 100 equip	(10) Illustration	
						(a)	(b)	(c)	(a)	(b)	(c)			(a) Figure no.	(b) Item no.
						1-20	21-50	51-100	1-20	21-50	51-100				
P—H—	5305-468-4293	SCREW-CAP SOCKET HEAD 5833-0832 (33525)		EA	6				*	*	*	2		7	21
P—H—	5305-331-5256	SCREW, LOCK 206507 (33525)		EA	1				*	*	*	2		7	22
X1 H—		1 EA.-PACKING, PREFORMED 5359-0124				See FSN 1040-408-2367								7	23
X1 H—		1 EA.-SHIM, 0.003 IN. 255059				See FSN 1040-408-2367								7	24
X1 H—		1 EA.-SHIM, 0.005 IN. 255060				See FSN 1040-408-2367								7	25
X1 H—		8 EA.-SHIM, 0.010 IN. 255061				See FSN 1040-408-2367								7	26
P—H—	1040-169-0352	PLUNGER, 2ND STAGE 876960		EA	1				0	1	1	5		7	27
P—H—	1040-408-2363	CYLINDER, 2ND STAGE 292167 (33525)		EA	1				*	*	*	2		7	28
X1 H—		1 EA-GASKET, HEAD 2ND STAGE 206519				See FSN 1040-408-2367								7	29
X1 H—		1 EA.-SPRING, INLET 241054				See FSN 1040-508-2367								7	30
P—H—	1040-408-2367	REPAIR KIT, 2ND STAGE 804972 (33525)		EA	1				1	1	1	5			
		COMPOSED OF:												7	30
		1 SPRING, INLET, 241054												7	29
		1 GASKET, HEAD, 206519												7	26
		8 SHIM, 0.010 IN., 255061												7	25
		1 SHIM, 0.005 IN., 255060												7	24
		1 SHIM, 0.003 IN., 255059												7	23
		1 PACKING, PREFORMED, 5359-0124												7	8
		1 VALVE, INTAKE, 206524												7	11
		1 VALVE, DISCHARGE, 241898												7	12
		1 SPRING, DISCHARGE 209923												7	13
		1 GASKET, PLATE, 206511												7	17
		1 SPACER, 0.003 IN., 254956												7	18
		1 SPACER, 0.005 IN., 254957												7	19
		2 SPACER, 0.010 IN., 254958												7	1
P—H—	4310-421-1477	INTERCOOLER 873483 (33525)		EA	1				2	*	*	2		8	1
P—H—	4730-331-4950	ELBOW, TUBE 90° CRES, 1/4 IN. OD TUBE, 1/8 PIPE SIZE MS20822-4C (96906)		EA	1				*	*	*	2		8	2
P—F—	5305-400-5720	SCREW, MACHINE, FILLISTER HEAD CRES, 8-32 THD, 5/8 IN. LONG 1563-0810 (33525)		EA	7	REF	REF	REF	REF	REF	REF	REF		8	3

(1) SMR Code	(2) Federal Stock Number	(3) Description Reference Number & Mfr Code Usable On Code		(4) Unit of meas	(5) Qty inc in unit	(6) 30-day DS maint allowance			(7) 30-DAY GS maint allowance			(8) 1-yr alw per 100 equip cntgcy	(9) Depot maint alw per 100 equip	(10) Illustration	
						(a)	(b)	(c)	(a)	(b)	(c)			(a) Figure no.	(b) Item no.
						1-20	21-50	51-100	1-20	21-50	51-100				
P—H—	4310-340-1017	BRACKET, COOLER 206869 (33525)		EA	1				*	*	*	2		8	4
P—F—	5340-565-0004	CLAMP, LOOP MS21919DG-10 (96906)		EA	11	REF	REF	REF	REF	REF	REF	REF		8	5
P—H—	5310-060-2039	NUT, SELF-LOCKING ALUM. 8-32 THD MS21044D08 (96906)		EA	7	REF	REF	REF	REF	REF	REF	REF		8	6
P—H—	1650-507-5449	BRACKET, INTERCOOLER 207799 (35525)		EA	1				REF	REF	REF	REF		8	7
P—H—	5310-285-7036	WASHER, LOCK STL, 0.200 IN. ID, 0.323 IN. OD, 0.043 IN. THK. MS122055 (96906)		EA	4				*	*	*	2		8	8
P—H—	5305-468-4291	SCREW-CAP SOCKET HEAD 5833-1132 (33525)		EA	4				*	*	*	2		8	9
P—H—	5305-331-5256	SCREW, LOCK 206507 (33525)		EA	1				REF	REF	REF	REF		8	10
P—H—	1650-953-0842	STOP, VALVE 242842 (33525)		EA	1	*	*	*	REF	REF	REF	REF		8	11
X1 H—		2 EA.-SHIM, 0.010 IN 254958				See FSN 1040-408-2369								8	12
X1 H—		1 EA.-SHIM, 0.005 IN 254957				See FSN 1040-408-2869								8	13
X1 H—		1 EA.-SHIM, 0.003 IN 254956				See FSN 1040-408-2869								8	14
P—H—	1040-408-2368	HEAD, 3RD STAGE 279768 (33525)		EA	1				*	*	*	2		8	15
P—H—	4820-699-0522	VALVE, RELIEF, 2ND STAGE 802259 (33525)		EA	1				*	*	*	2		8	16
X1 H—		1 EA.-GASKET, PLATE 206511				See FSN 1040-408-2869								8	17
P—H—	5330-531-3021	SEAL, PLATE 206508 (33525)		EA	1				*	*	*	2		8	18
X1 H—		1 EA.-SPRING, OUTLET 209923				See FSN 1040-408-2869								8	19
X1 H—		1 EA.-VALVE, OUTLET 241898				See FSN 1040-408-2869								8	20
P—H—	1650-547-0397	PLATE, VALVE 3RD STAGE 241056 (33525)		EA	1				*	*	*	2		8	21
X1 H—		1 EA.-VALVE, INLET 211958				See FSN 1040-408-2869								8	22
X1 H—		1 EA.-SPRING, INLET 254917				See FSN 1040-408-2869								8	23
X1 H—		1 EA.-GASKET, HEAD 106512				See FSN 1040-408-2869								8	24
P—H—	1040-408-2370	CYLINDER PLUNGER ASSEMBLY 3RD STAGE 876959 (33525)		EA	1				2	1	1	5		8	25

(1) SMR Code	(2) Federal Stock Number	(3) Description Reference Number & Mfr Code Usable On Code		(4) Unit of meas	(5) Qty inc in unit	(6) 30-day DS maint allowance			(7) 30-DAY GS maint allowance			(8) 1-yr alw per 100 equip cntgcy	(9) Depot maint alw per 100 equip	(10) Illustration	
						(a)	(b)	(c)	(a)	(b)	(c)			(a) Figure no.	(b) Item no.
						1-20	21-50	51-100	1-20	21-50	51-100				
X1 H —		1 EA.-SHIM, 0.010 IN. 255064												8	26
X1 H —		2 EA.-SHIM, 0.005 IN. 255063												8	27
X1 H —		1 EA.-SHIM, 0.003 IN. 255062												8	28
X1 H —		1 EA.-PACKING, PREFORMED 5359-0117												8	29
P—H—	1040-408-2369	REPAIR KIT, 3RD STAGE 804973 (33525) COMPOSED OF: 1 PACKING, PREFORMED, 5359-0117 1 SHIM, 0.003 IN., 255062 1 SHIM, 0.005 IN., 255063 4 SHIM, 0.010 IN., 255064 1 GASKET, HEAD, 206512 1 SPRING, INLET, 254917 1 VALVE, INLET, 211958 1 VALVE, OUTLET, 241898 1 SPRING, Outlet, 209923 1 GASKET, PLATE, 206511 2 SHIM, 0.010 IN., 254958 1 SHIM, 0.005 IN., 254957 1 SHIM, 0.003 IN., 254956	EA	1				1	1	1	5			8	29
X1 H —		4 EA.-RING, COMPRESSION 241057												8	28
X1 H —		2 EA.-RING, RETAINING 254995												8	27
X1 H —		3 EA.-SHIM, PISTON PIN 254994												8	26
P—H—	1040-408-2373	PIN, PISTON 277941 (33525)	EA	1				1	1	2	15			8	24
P—H—	1040-408-2371	PISTON, 1ST STAGE 292586 (33525)	EA	1				*	*	*	2			8	23
P—H—	5305-405-2553	SETSCREW 255200	EA	6				*	*	*	2			8	22
X2 H —		PLATE, OIL INSTRUCTION 279949 (33525)	EA	1										8	20
P—H—	2995-237-5653	GASKET, MOTOR MS9135-01 (96906)	EA	1				*	*	*	2			8	19
X1 H —		1 EA. - SEAL 256645												8	17
														8	12
														8	13
														8	14
														8	17
														8	12
														8	13
														8	14
														9	1
														9	2
														9	3
														9	4
														9	5
														9	6
														10	1
														10	2
														10	3

(1) SMR Code	(2) Federal Stock Number	(3) Description Reference Number & Mfr Code Usable On Code		(4) Unit of meas	(5) Qty inc in unit	(6) 30-day DS maint allowance			(7) 30-DAY GS maint allowance			(8) 1-yr alw per 100 equip cntgcy	(9) Depot maint alw per 100 equip	(10) Illustration	
						(a) 1-20	(b) 21-50	(c) 51-100	(a) 1-20	(b) 21-50	(c) 51-100			(a) Figure no.	(b) Item no.
						X1 H —		1 EA.-PACKING, PREFORMED 5359-0146							
X1 H —		1 EA.-RING, BEVEL RETAINING 256680												10	5
X1 H —		1 EA.-SPACER 256678												10	6
P—H—	3110-971-1365	BEARING 245734 (33525)		EA	1				*	*	*	2		10	7
P—H—	1040-062-8574	KEYSTONE 842311 (33525)		EA	1				*	*	*	2		10	8
X1 H —		SCREW, CAP, SOCKET HEAD, HEX, DRILLED STL, 10-32 THD, 5/8 IN. LG. MS24678-11 (96906)		EA	4									10	9
X1 H —		WASHER, LOCK STL, 0.200 IN. ID, 0.323 in. OD, 0.043 IN. THK. MS122055 (96906)		EA	8									10	10
X1 H —		COUNTERWEIGHT 255386 (33525)		EA	2									10	11
P—H—	1040-408-2374	CRANKSHAFT 292596 (33525)		EA	1				*	*	*	2		10	12
X2 H —		CRANKCASE 895466 (33525)		EA	1									10	13
P—H—	5330-524-0730	PACKING, PREFORMED 5305-0500 (33525)		EA	1				*	*	*	2		10	14
P—H—	5305-472-1537	SCREW, CAP SOCKET HEAD 5833-1012 (33525)		EA	4				*	*	*	2		10	15
P—H—	5310-167-0834	WASHER, FLAT STL, 0.203 IN. ID, 3/8 IN. OD, 0.032 IN. THK. AN960-10L (88044)		EA	4				*	*	*	2		10	16
P—O—	1040-408-2354	STRAINER, OIL 876071 (33525)		EA	1	*	*	*	*	1	1	5		10	17
P—O—	5330-576-9925	PACKING, PREFORMED 5304-0600 (33525)		EA	1	*	*	*	*	*	*	2		10	18
P—O—	5365-287-0094	PLUG MACHINE THREAD ALUM., 1/4 IN. OD TUBE SIZE AN814-4D (88044)		EA	1	*	*	*	*	*	*	2		10	19
P—O—	5330-983-9840	PACKING PREFORMED 5304-0400 (33525)		EA	1	1	1	1	*	*	*	5		10	20
P—H—	1040-403-5646	SUMP, OIL 292129 (33525)		EA	1				*	*	*	2		10	21
P—O—	5330-584-0150	PACKING. PREFORMED 5304-0500 (33595)		EA	1	1	1	1	*	*	*	5		10	22
P—O—	1040-237-8250	DIPSTICK 277976 (33525)		EA	1				*	*	*	2		10	23

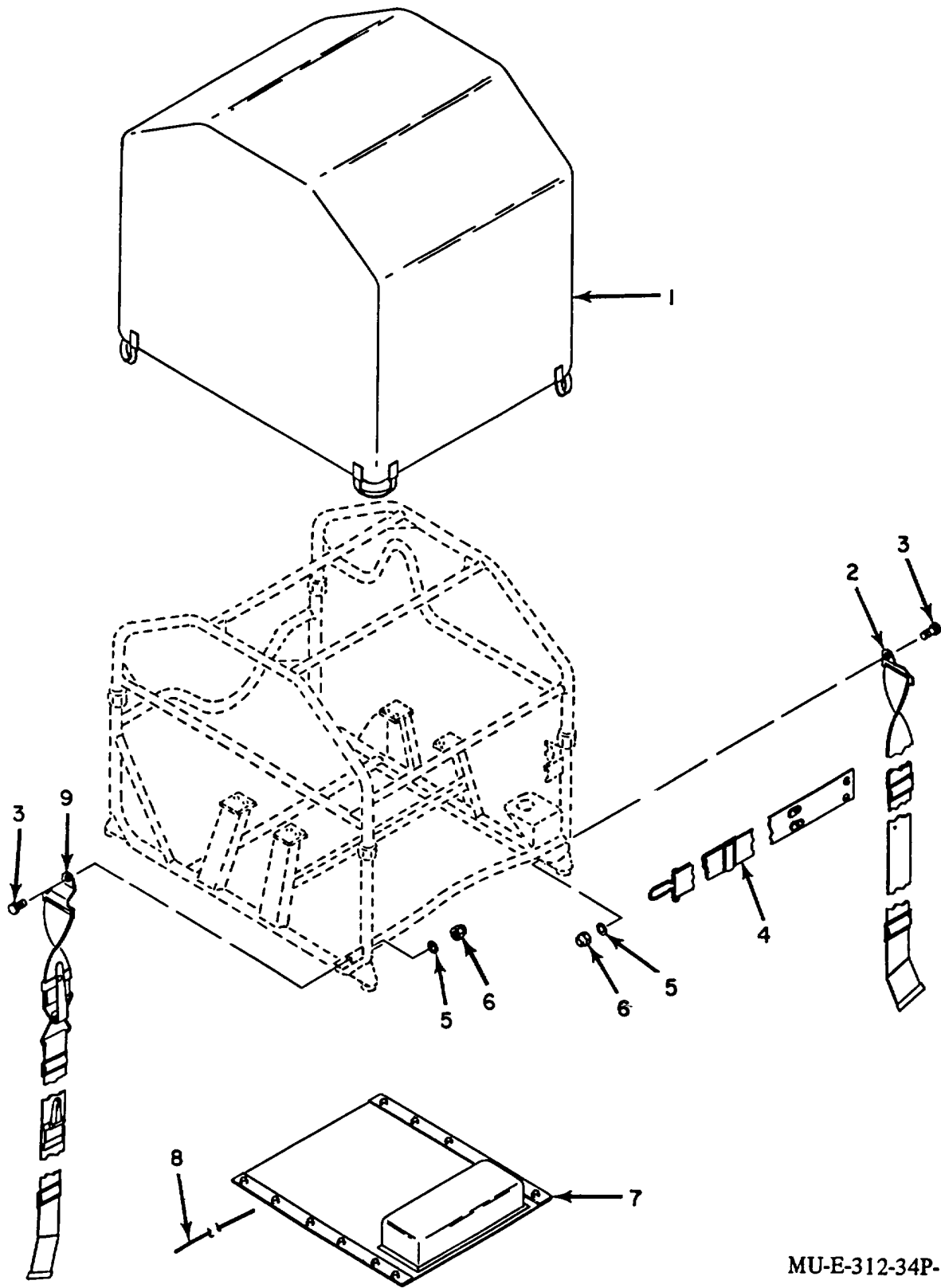
(1) SMR Code	(2) Federal Stock Number	(3) Description Reference Number & Mfr Code Usable On Code		(4) Unit of meas	(5) Qty inc in unit	(6) 30-day DS maint allowance			(7) 30-DAY GS maint allowance			(8) 1-yr alw per 100 equip cntgcy	(9) Depot maint alw per 100 equip	(10) Illustration	
						(a)	(b)	(c)	(a)	(b)	(c)			(a) Figure no.	(b) Item no.
						1-20	21-50	51-100	1-20	21-50	51-100				
P—H—	5310-167-0836	WASHER, FLAT AN960-516L (88044)		EA	1				*	*	*	2		10	24
P—H—	5310-054-4892	NUT, PLAIN-HEXAGON, MACH. SCR. STL, 5/16-24 THD. MS35650-3312 (96906)		EA	1				*	*	*	2		10	25
P—H—	1040-408-2362	RING, QUAD 255067 (33525)		EA	1				*	*	*	2		10	26
P—H—	1040-408-2372	REPAIR KIT, CRANKCASE 804974 (33525) COMPOSED OF: 2 RING, RETAINING, 254995 3 SHIM, PISTON PIN, 254994 1 SEAL, 256645 1 PACKING, 5359-0146 1 RING, BEVEL, 256680 1 SPACER, 256678		EA	1				0	1	1	5		10	
		GROUP 400 ENGINE												9	2
P—H—	1040-971-4920	BRACKET, LEFT HAND B68-13-1540 (81361)		EA	2				*	*	*	2		11	1
P—H—	5306-064-8407	BOLT, SELF-LOCKING 1611208PC17 (10001)		EA	12				*	*	*	2		11	2
P—H—	1040-971-4921	BRACKET, RIGHT HAND B68-13-1541 (81361)		EA	2				1	1	1	2		11	3
P—H—	5310-209-0786	WASHER, LOCK, FLAT-EXTERNAL TOOTH STL, 1/4 IN. ID, 1/2 IN. OD 0.025 IN. THK. MS35335-33 (96906)		EA	8				1	1	1	2		11	4
P—H—	5305-068-0500	SCREW, CAP, HEXAGON HEAD STL, 1/4-20 THD, 1 IN. LONG MS90725-3 (96906)		EA	8				1	1	1	2		11	5
P—H—	2990-972-2318	PIPE, EXHAUST B68-13-1572 (81361)		EA	1				*	*	*	2		11	6
P—H—	5305-939-9190	SCREW, MACHINE, DRILLED FILLISTER HEAD CRES, 10-24 THD, 1/4 IN. LONG MS35275-265 (96906)		EA	2					*	*	2		11	7
P—H—	3020-971-1366	PULLEY D68-13-1532 (81361)		EA	1				1		1	2		11	8
P—H—	5310-543-5933	WASHER, LOCK, FLAT-INTERNAL TOOTH CRES, 0.200 IN. ID, 3/8 IN. OD 0.023 IN. THK. MS35333-73 (96906)		EA	2				*	*	*	2		11	9
P—H—	5310-934-9765	NUT, PLAIN-HEXAGON, MACHINE SCREW CRES, 10-24 THD, MS35650-304 (96906)		EA	2				*	*	*	2		11	10

(1) SMR Code	(2) Federal Stock Number	(3) Description Reference Number & Mfr Code Usable On Code		(4) Unit of meas	(5) Qty inc in unit	(6) 30-day DS maint allowance			(7) 30-DAY GS maint allowance			(8) 1-yr alw per 100 equip cntgcy	(9) Depot maint alw per 100 equip	(10) Illustration		
						(a)	(b)	(c)	(a)	(b)	(c)			(a) Figure no.	(b) Item no.	
						1-20	21-50	51-100	1-20	21-50	51-100					
P—H—S	2805-068-7510	ENGINE		EA	1				*	*	*	2		11	11	
X1 H—		1A08-3 (97403) LOCKWIRE		IN.	6									11	12	
X2 H—		CRES. 0.032 IN. OD MS20995C32 (96906)														
P—F—		4730-186-7797	PLATE-OIL		EA	1									11	13
P—F—			256936 (33525) NIPPLE, PIPE		EA	1	*	*	*	*	*	*	2		11	14
P—F—		4730-540-2577	AN911-1 (88044) ELBOW		EA	1	*	*	*	*	*	*	2		11	15
X1 H—			500592 (10001) 1 EA.-ADAPTER, CRANKSHAFT		EA	1	See FSN 1040-408-2375							11	16	
X1 H—		279804 2 EA.-SHIM, 0.032		EA	2	See FSN 1040-408-2375							11	17		
X1 H—		256661 2 EA.-SHIM, 0.042		EA	2	See FSN 1040-408-2375							11	18		
X1 H—		256662 1 EA.-SHIM, 0.050		EA		See FSN 1040-408-2375							11	19		
X1 H—		256663 WASHER, ADAPTER		EA	1								11	20		
X1 H—		256664 (33525) 1 EA.-SCREW, ADAPTER				See FSN 1040-408-2375							11	21		
X1 H—		213299 ADAPTER, ENGINE		EA	1								11	22		
X1 H—	279801 (33525) LOCKWASHER		EA	8								11	23			
P—H—	5306-637-9691	STL, 0.326 IN. ID, 0.575 IN. OD, 0.001 IN. THK. MS122058 (96906)		EA	8				*	*	*	2		11	24	
MH—F—		1264-2124 (33525) FUEL LINE		EA	1								11	25		
P—F—	1040-084-0436	MANUFACTURED FROM TUBE COPPER .250 DIA, .030 WALL THICKNESS 4710-277-5525														
P—F—		2 EA.-NUT, BRASS 4730.011-6452		EA	1	1	2	3	*	*	*	20		11	26	
P—F—	5330-263-8030	FILTER, FUEL B68-13-1566 (81361)		EA	1	1	2	3	*	*	*	20		11	27	
P—F—		PACKING, PREFORMED MS29512-06 (96906)		EA	1	*	*	*	*	*	*	2		11	28	
P—F—	5310-833-2080	NUT-PLAIN-HEXAGON, MACHINE SCREW														
		STL, 10-32 THD MS35650-302 (96906)		EA	1	*	*	*	*	*	*	2		11	28	

					(a) 1-20	(b) 21-50	(c) 51-100	(a) 1-20	(b) 21-50	(c) 51-100				
P—F—	5310-576-5752	WASHER, LOCK, FLAT-INTERNAL TOOTH STL, 0.200 IN. ID, 3/8 IN. OD 0.023 IN. THK MS35333-39 (96906)	EA	1	*	*	*	*	*	*	2		11	29
P—F—	5340-079-7837	CLAMP, LOOP STL, 1/4 IN. OD TUBE MS21333-67 (96906)	EA	1	*	*	*	*	*	*	2		11	30
P—F—	5305-989-6265	SCREW, MACHINE-PANHEAD, CROSS-RECESSED STL, 10-32 THD, 7/16 IN. LG. MS35207-262 (96906)	EA	1	*	*	*	*	*	*	2		11	31
P—H—	1040-408-2375	REPAIR KIT, C'SHAFT ADAPTER 804975 (33525) COMPOSED OF: 1 ADAPTER, 279804 2 SHIM, 256661 2 SHIM, 256662 2 SHIM, 256663 1 SCREW, 213299	EA	1				*	*	*	2		11	
													11	16
													11	17
													11	18
													11	19
													11	21
P—F—	5305-068-0507	GROUP 500 FRAME-FUEL TANK SCREW, CAP, HEX. HD. STL, 1/4-28 THD, / IN. LONG MS90726-7 (96906)	EA	4	*	*	*	*	*	*	2		12	1
M—H—F—		CLAMP, TANK B68-13-1577 (81361) MANF. FROM STAINLESS STEEL, CLASS 2D 9515-204-4555	EA	4									12	2
P—F—	5365-289-3070	PLUG, MACHINE THREAD-"O" RING SEAL ALUM, 1/2 IN. OD TUBE MS9015-08 (96906)	EA	1	1	1	1	*	*	*	2		12	3
P—F—	5330-263-8031	PACKING, PREFORMED MS29512-08 (96906)	EA	1	*	*	*	*	*	*	2		12	4
P—F—	5310-877-5796	NUT, SELF-LOCKING, HEXAGON STL, 1/4-28 THD. MS21044-N4 (96906)	EA	4	*	*	*	*	*	*	2		12	5
P—F—	5310-902-6676	NUT, SELF-LOCKING, HEX. STL, 10-32 THD MS21083-N3 (96906)	EA	5	*	*	*	*	*	*	2		12	6
P—F—	5310-809-8546	WASHER, FLAT-ROUND STL, 7/32 IN. ID, 1/2, IN. OD 0.049 IN. THK. MS27183-8 (96906)	EA	10	*	*	*	*	*	*	2		12	7
P—F—	5340-597-9408	CLAMP, LOOP STL, 5/8 IN. OD TUBE MS21919-F10 (96906)	EA	1	*	*	*	*	*	*	2		12	8

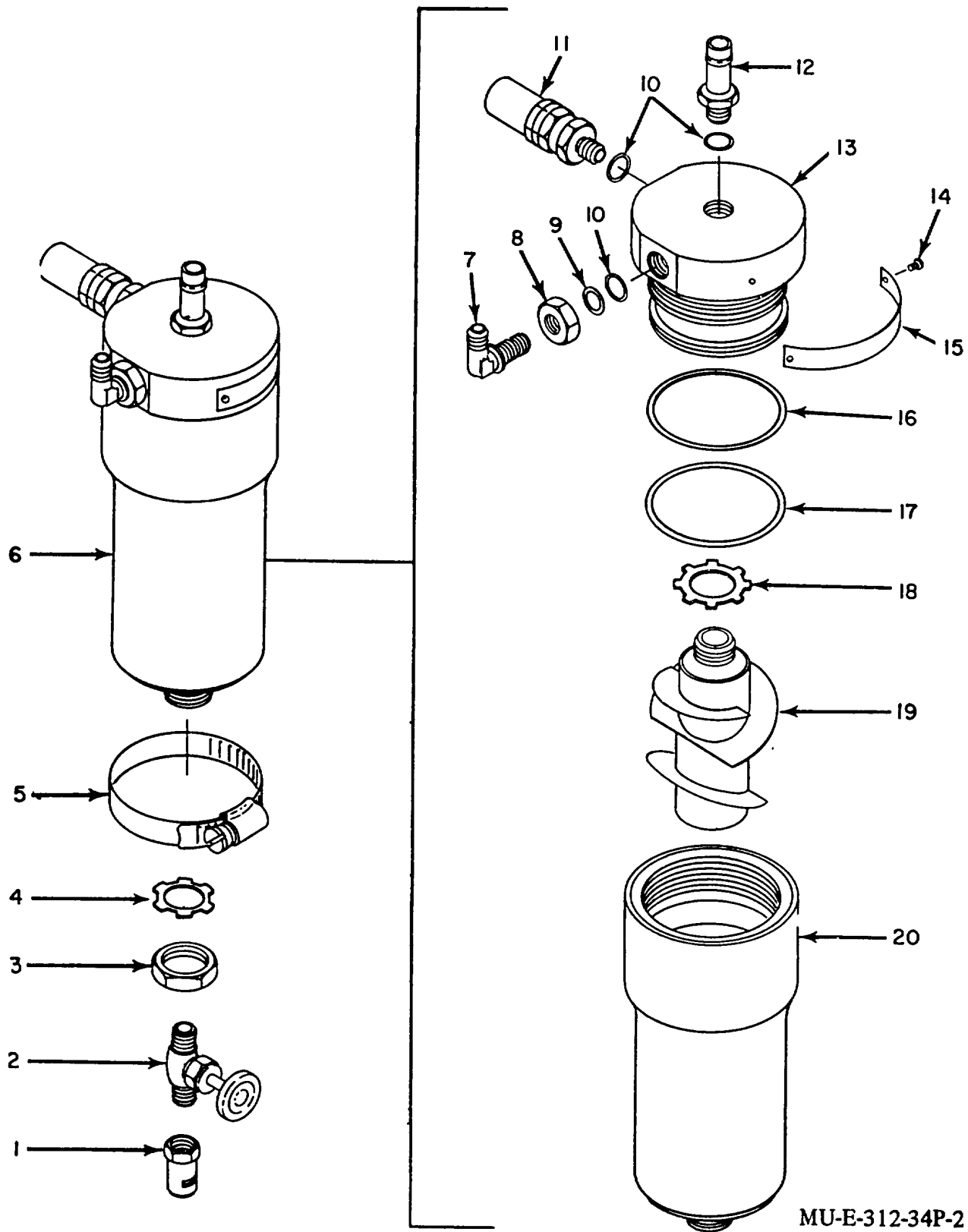
					(a) 1-20	(b) 21-50	(c) 51-100	(a) 1-20	(b) 21-50	(c) 51-100				
P—F—	5305-989-7435	SCREW, MACHINE-PAN HEAD, CROSS-RECESSED STL, 10-32 THD, 5/8 IN. LG. MS35207-264 (96906)	EA	5	*	*	*	*	*	*	2		12	9
P—F—	4030-956-6126	HOOK, CHAIN A81-1-882 (81361)	EA	1	*	*	*	*	*	*	*		12	10
P—F—	4010-958-0633	CHAIN MIL-C-271 (81349)	EA	1	*	*	*	*	*	*	2		12	11
P—F—	4030-063-3979	HOOK, CHAIN B81-1-526 (81361)	EA	1	*	*	*	*	*	*	2		12	12
P—F—	1040-976-8980	CAP, ASSY B68-13-1560 (81361)	EA	1	1	1	1	*	*	*	2		12	13
P—F—	5330-265-1075	PACKING, PREFORMED MS29513-218 (96906)	EA	1	*	*	*	*	*	*	2		12	14
P—F—	1040-151-4119	PLATE 279950 (33525)	EA	1	*	*	*	*	*	*	2		12	15
P—F—	2910-912-9485	TANK, FUEL E68-13-1585 (81361)	EA	1	*	*	*	*	*	*	2		12	16
P—F—	9905-436-7499	PLATE, INSTRUCTION D68-13-1586 (81361)	EA	1	1	1	1	*	*	*	2		12	17
P—F—	5340-282-8335	CLAMP, LOOP STL, 1/2 IN. OD TUBE MS21919-F8 (96906)	EA	4	*	*	*	*	*	*	2		12	18
P—F—	1040-921-5291	CAGE, PROTECTING E68-13-1587 (81361)	EA	1	*	*	*	*	*	*	2		12	19
P—H—	5320-999-0307	RIVET, BLIND MIL-R-242 13-1 (81349)	EA	4				*	*	*	2		12	20
X2 H—		NAMEPLATE B68-13-1563 (81361)	EA	1									12	21
P—H—	1040-921-3298	FRAME, ENGINE MOUNTING E68-13-1500 (81361)	EA	1				*	*	*	2		12	22
P—H—	5305-993-2459	SCREW, MACHINE STL. PLTD., PAN. HD 1/4-28, 1 IN. LG. MS35207-283 (96906)	EA	4				*	*	*	1		12	23
P—H—	5340-977-7247	MOUNT, RUBBER A68-12-1523 (81361)	EA	4				2	3	6	50		12	24
P—H—	5310-194-0637	WASHER, FLAT STL. PLTD. (0.276 IN. ID) MS9320-1 0 (96906)	EA	4				*	*	*	1		12	25
P—H—	5310-982-4988	NUT, SELF-LOCKING HEX, HD. CRES 1/4-28 MS21045-C4 (96906)	EA	4				REF	REF	REF	REF		12	26

(1) SMR Code	(2) Federal Stock Number	(3) Description Reference Number & Mfr Code Usable On Code		(4) Unit of meas	(5) Qty inc in unit	(6) 30-day DS maint allowance			(7) 30-DAY GS maint allowance			(8) 1-yr alw per 100 equip cntgcy	(9) Depot maint alw per per equip	(10) Illustration	
						(a)	(b)	(c)	(a)	(b)	(c)			(a) Figure no.	(b) Item no.
						1-20	21-50	51-100	1-20	21-50	51-100				
		GROUP 500 - Continued													
		CHARGING HOSE													
N	P O	5330-805-2966	PACKING, PREFORMED MS28778-4 (96906)	EA	1	*	*	*	*	*	*	*	*	13	1
N	P O	4730-933-0723	ELBOW, TUBE TO BOSS MS51528-A4 (96906)	EA	1	*	*	*	*	*	*	*	*	13	2
N	P O	4730-084-0435	TEE, PIPE TO TUBE B68-13-1553 (81361)	EA	1	*	*	*	*	*	*	*	*	13	3
N	P O	6685-087-6925	GAGE, PRESSURE DIAL INDICATING 21-25DFM1-4CBM3000 (38508)	EA	1	*	*	*	*	*	*	*	*	13	4
N	P O	4730-618-3410	ADAPTER, STRAIGHT, PIPE TO TUBE B81-3-30 (81361)	EA	1	*	*	*	*	*	*	*	*	13	5
N	P O	4720-289-2630	HOSE ASSEMBLY, NONMETALLIC B81-3-65 (81361)	EA	1	*	*	*	*	*	*	*	*	13	6
N	P O	1040-759-7352	VALVE ASSEMBLY C81-6-407 (81361)	EA	1	*	*	*	*	*	*	*	*	13	7
N	P O	4730-851-2278	ADAPTER, STRAIGHT, PIPE TO TUBE B81-6-384 (81361)	EA	1	*	*	*	*	*	*	*	*	13	8
N	P O	4730-863-0774	COUPLING HALF, QUICK DISCONNECT 2AEF2 (95138)	EA	1	*	*	*	*	*	*	*	*	13	9



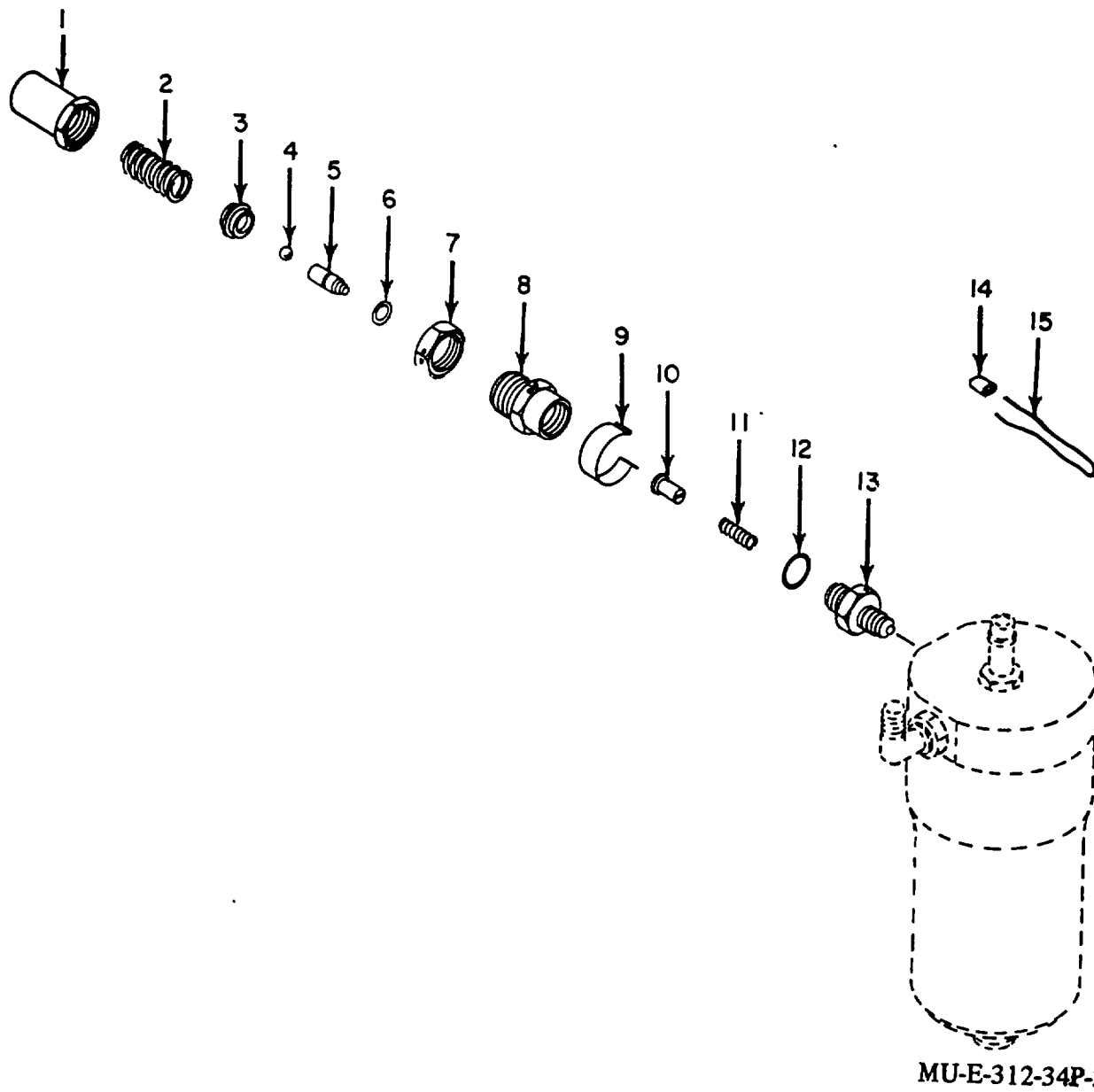
MU-E-312-34P-1

Figure 1. Canvas group.



MU-E-312-34P-2

Figure 2. Water separator assembly.



MU-E-312-34P-3

Figure 3. Relief valve.

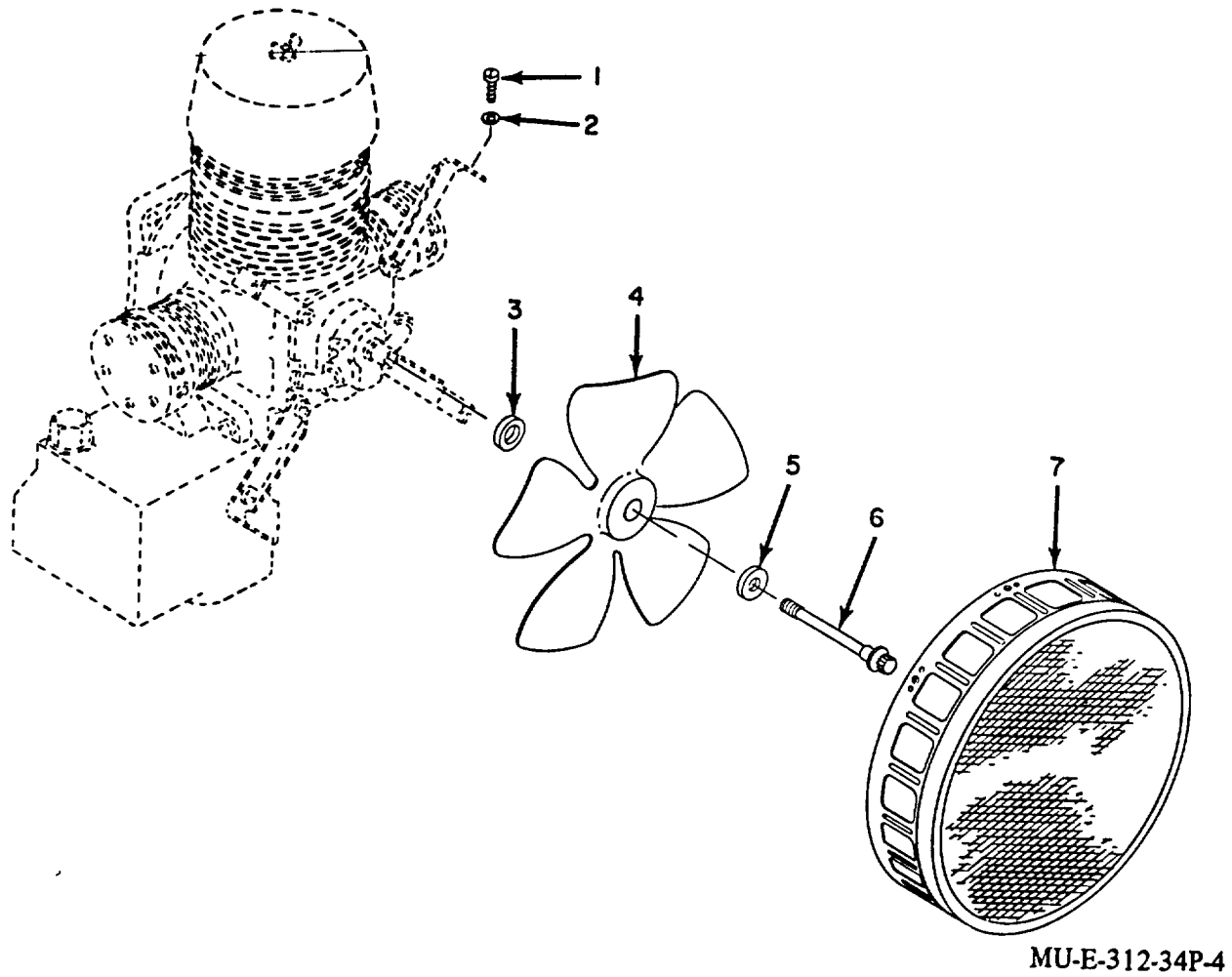
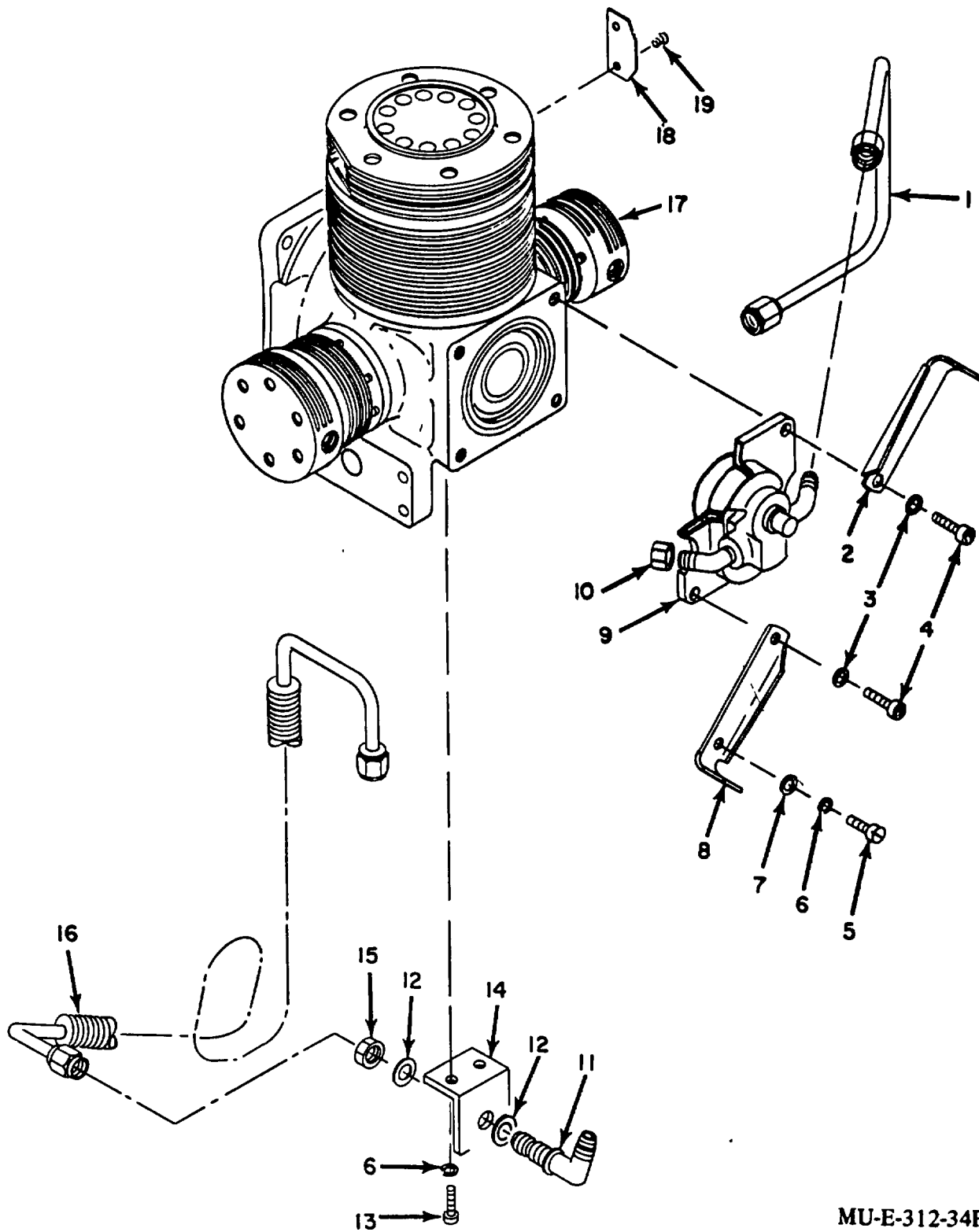
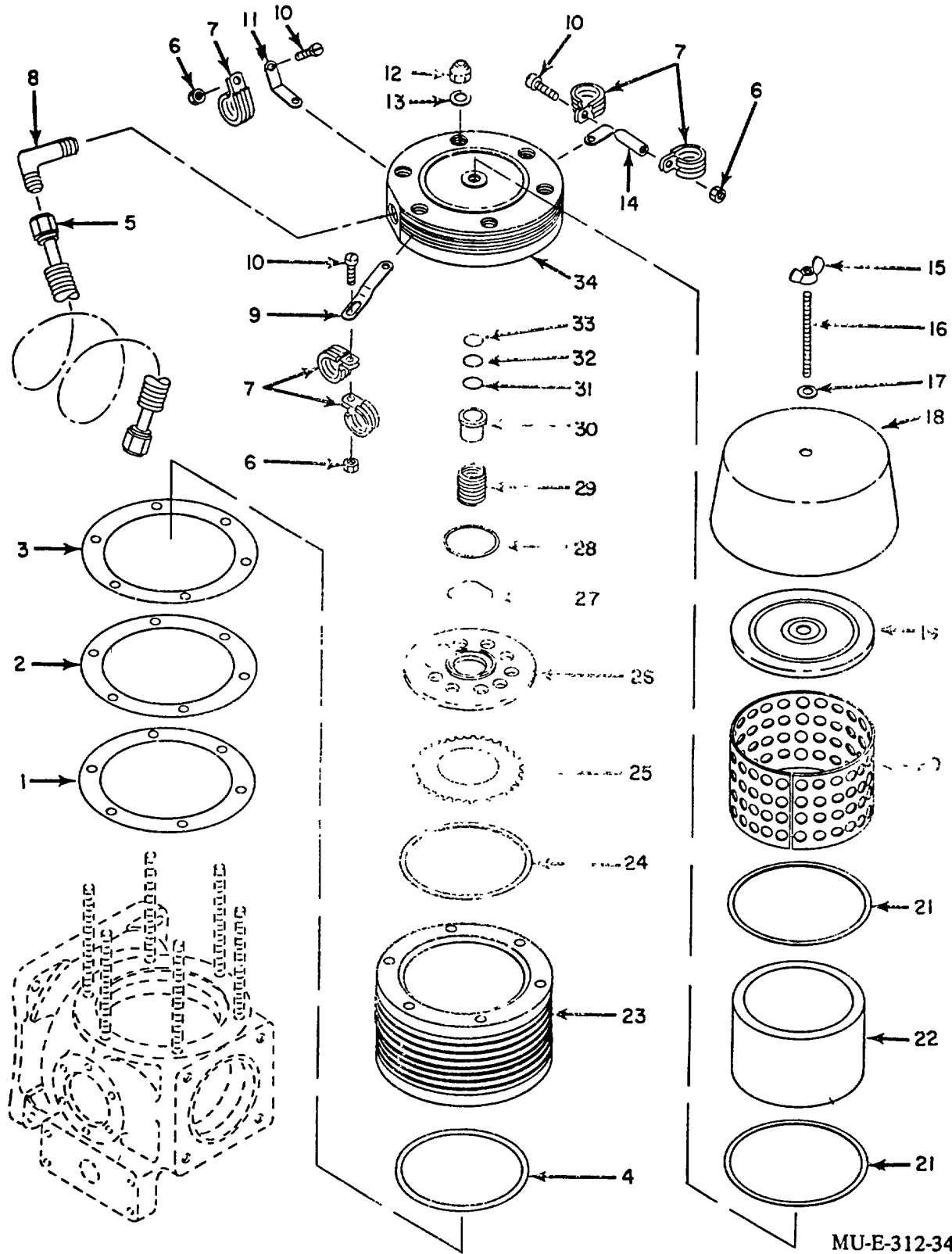


Figure 4. Fan and fan guard.



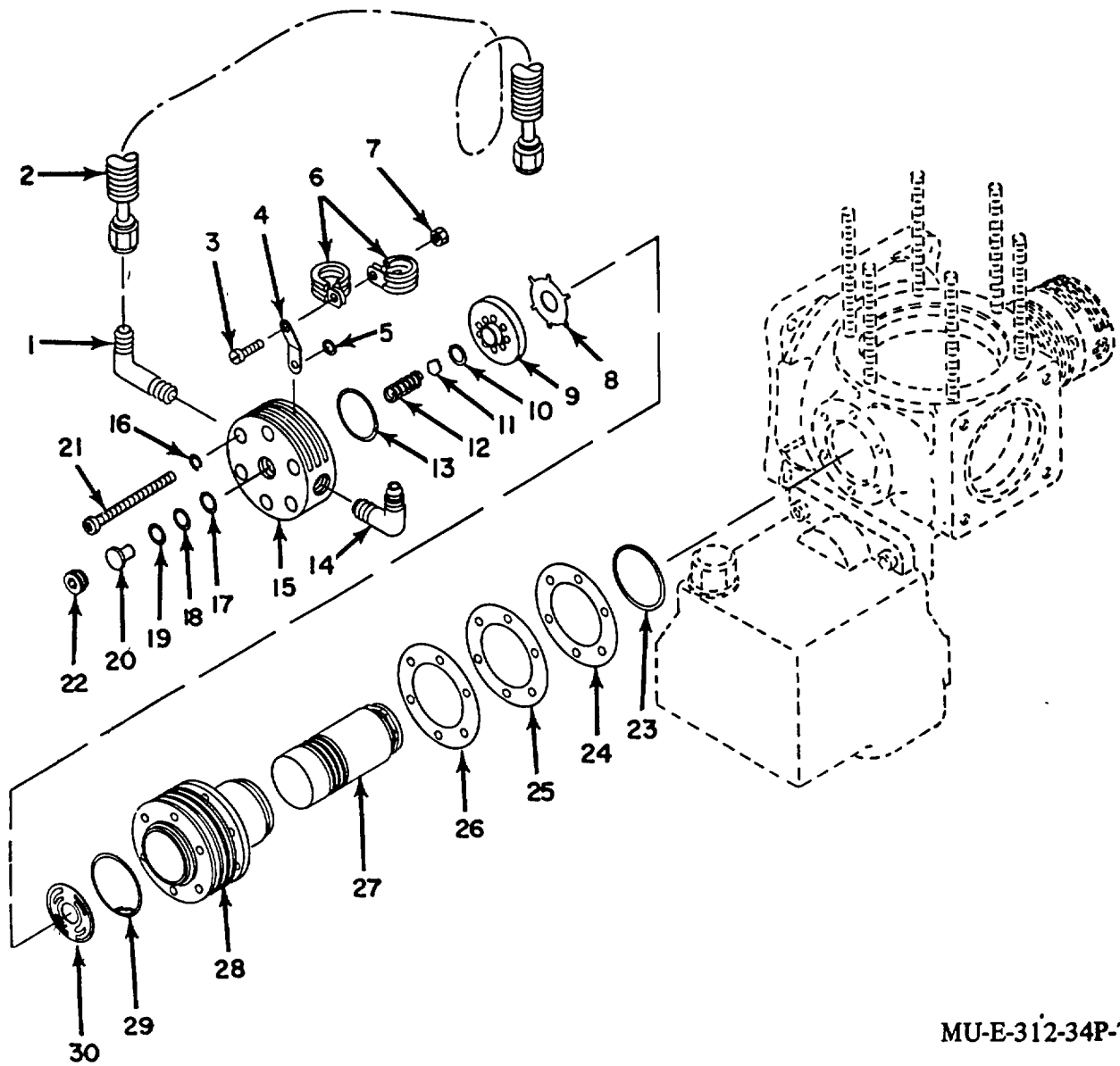
MU-E-312-34P-5

Figure 5. Aftercooler, oil pump, and compressor.



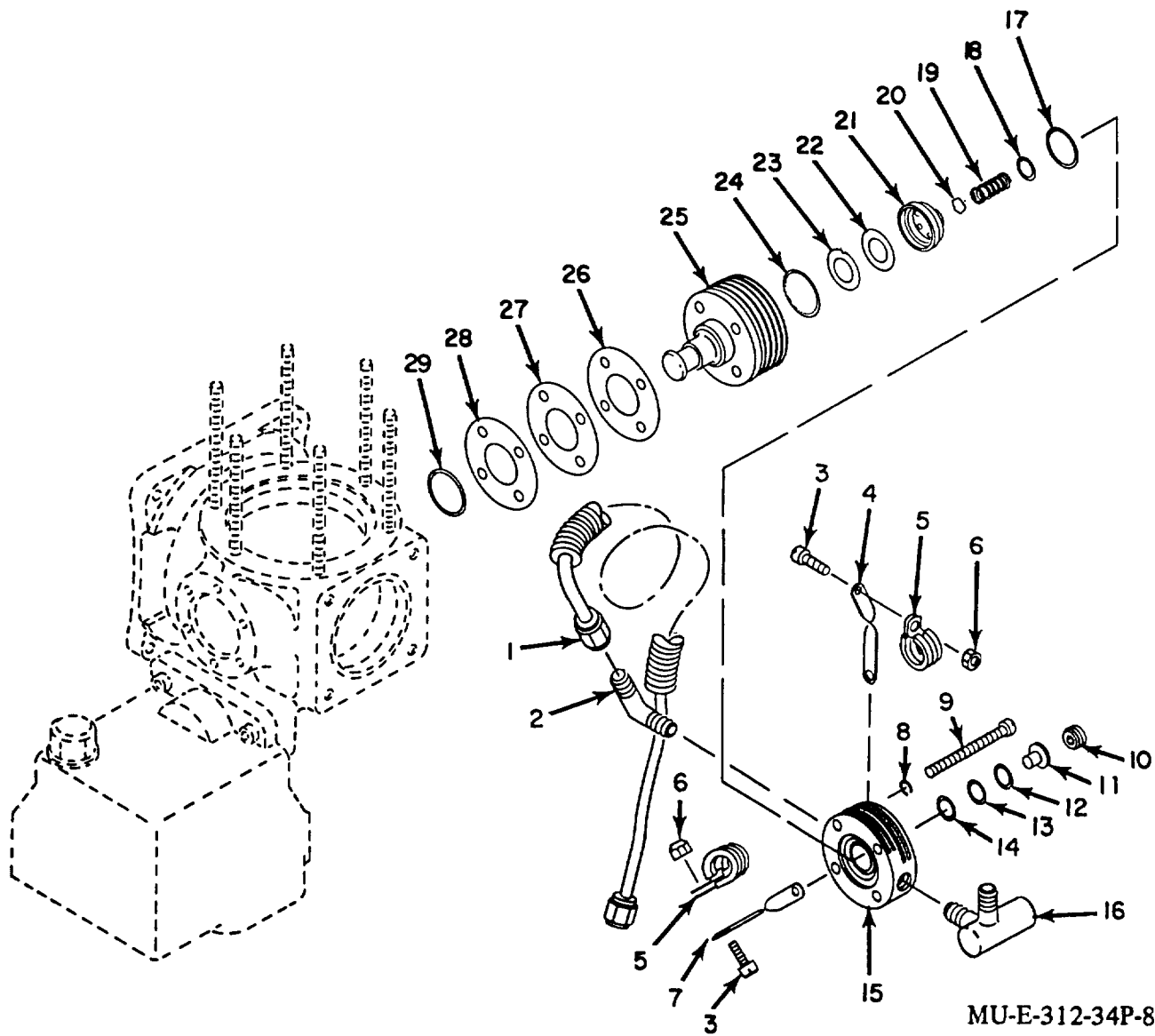
MU-E-312-34P-6

Figure 6. 1st stage filter and valve



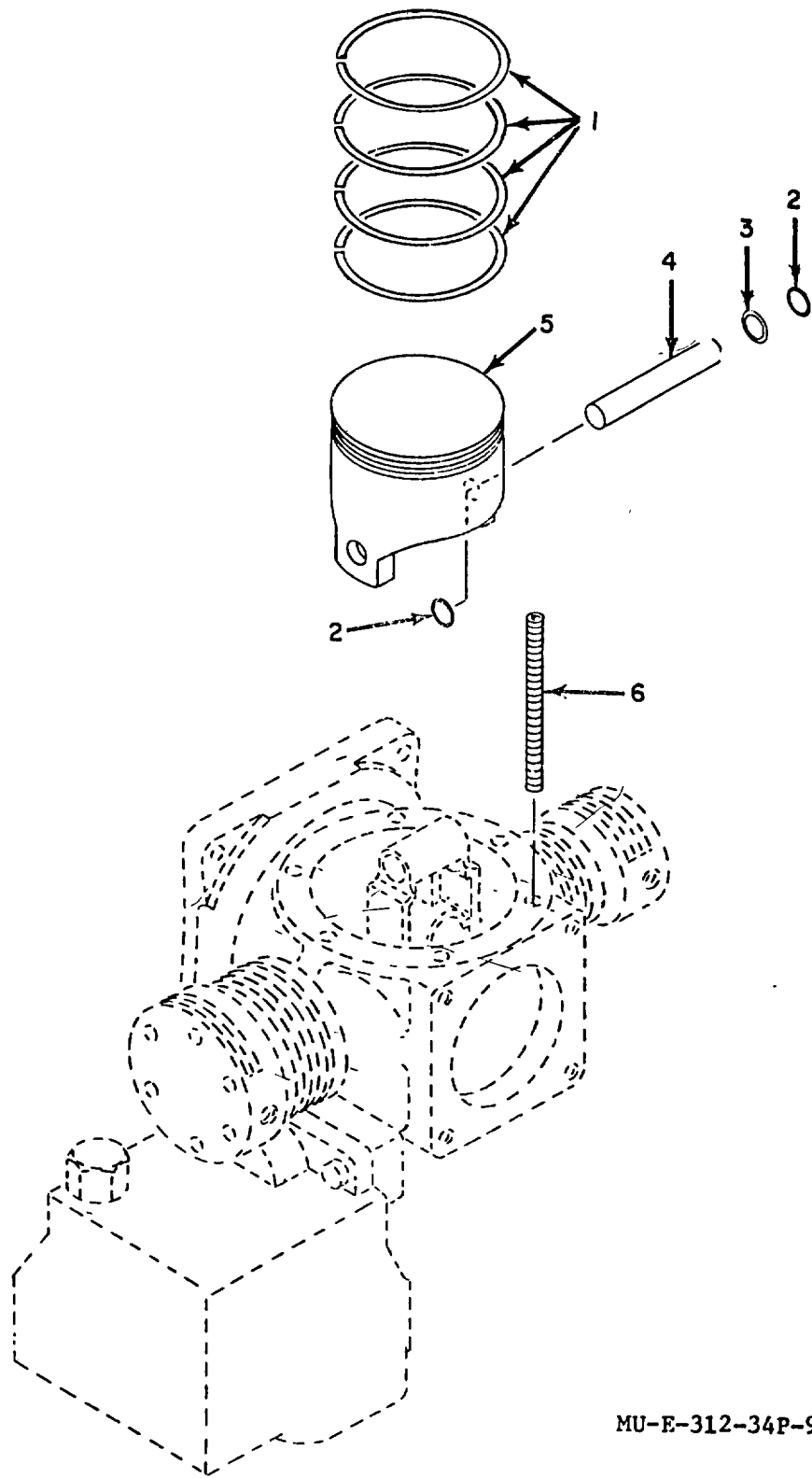
MU-E-312-34P-7

Figure 7. 2nd stage cylinder.



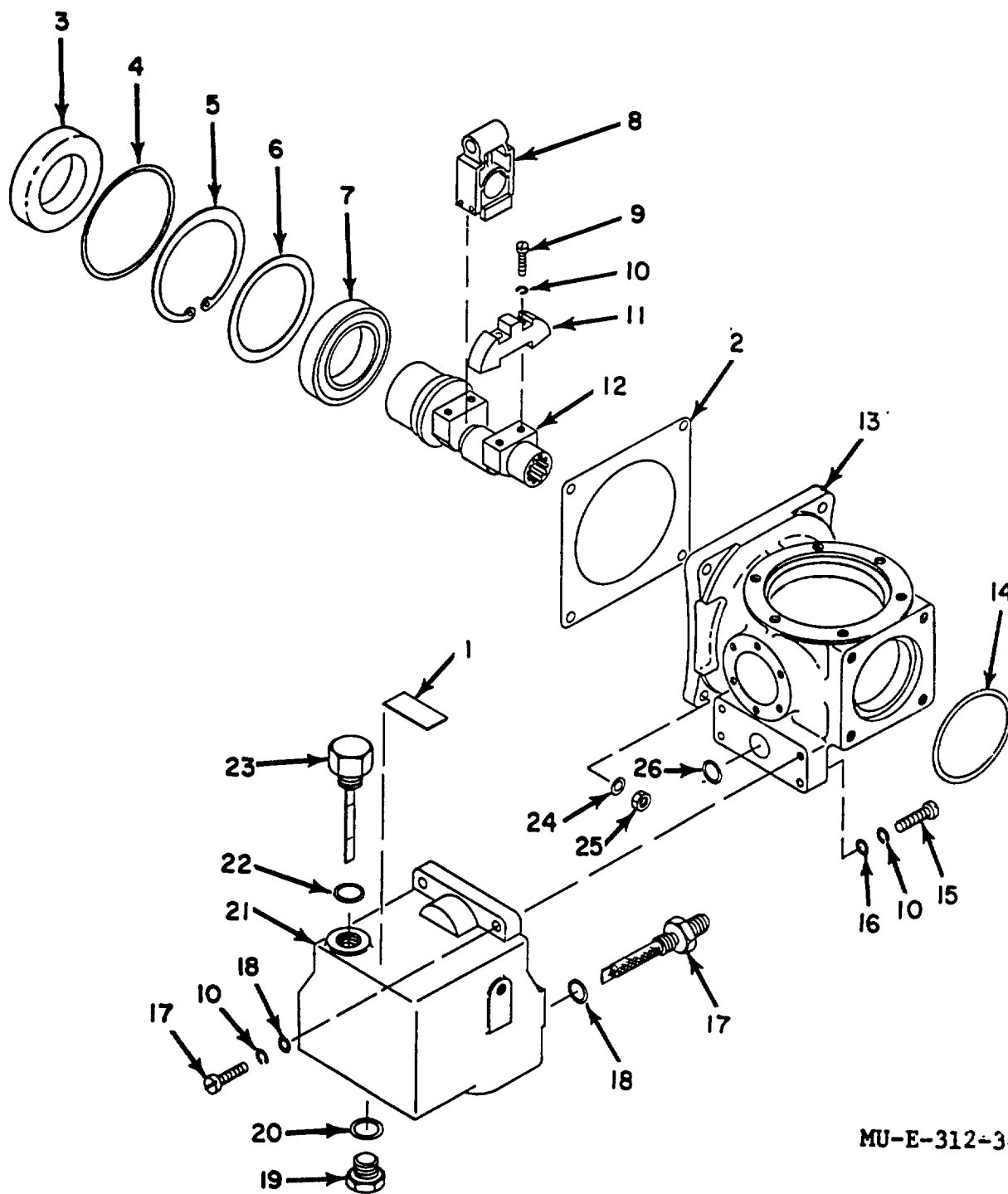
MU-E-312-34P-8

Figure 8. 3rd stage cylinder.



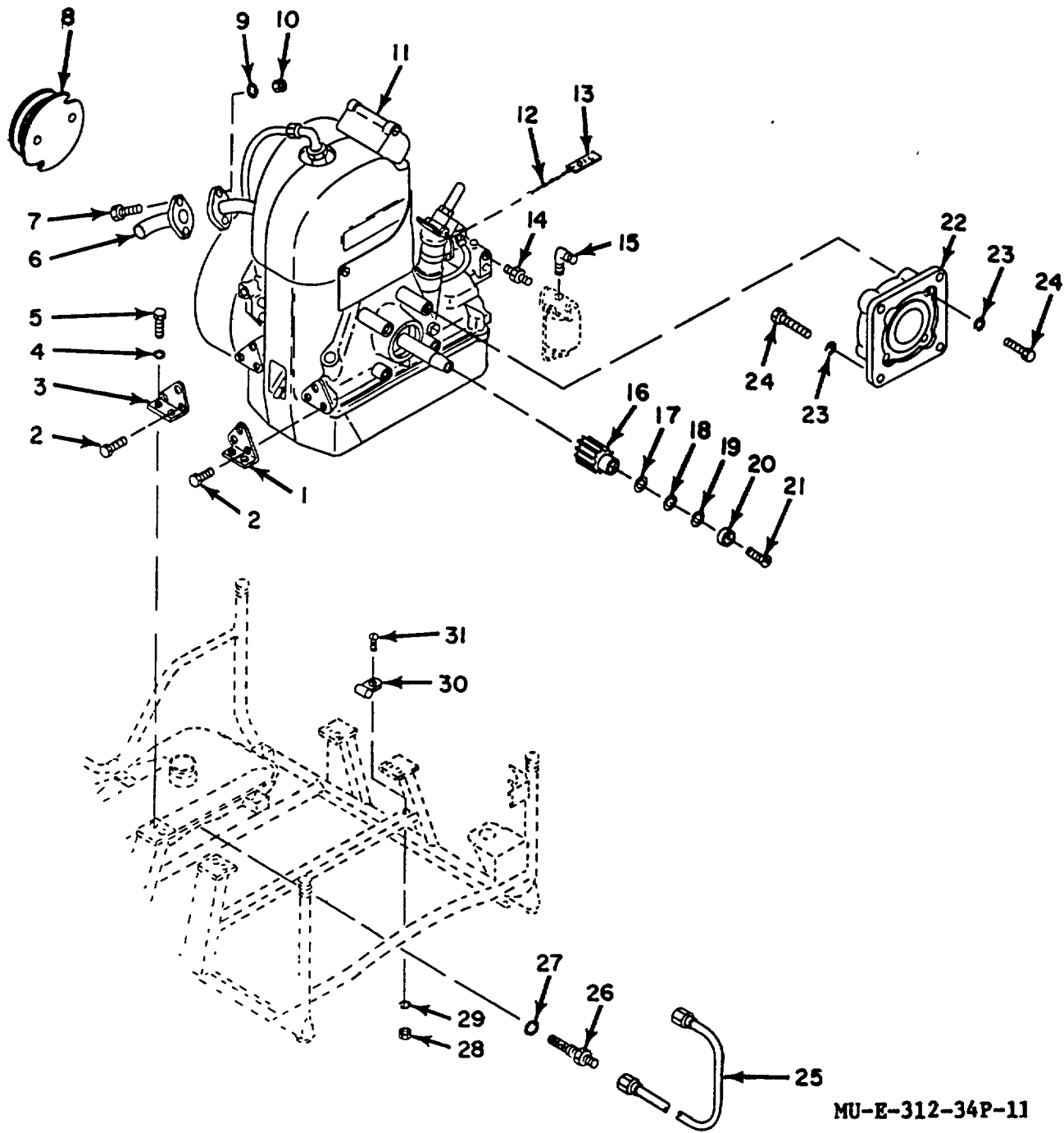
MU-E-312-34P-9

Figure 9. 1st stage piston.



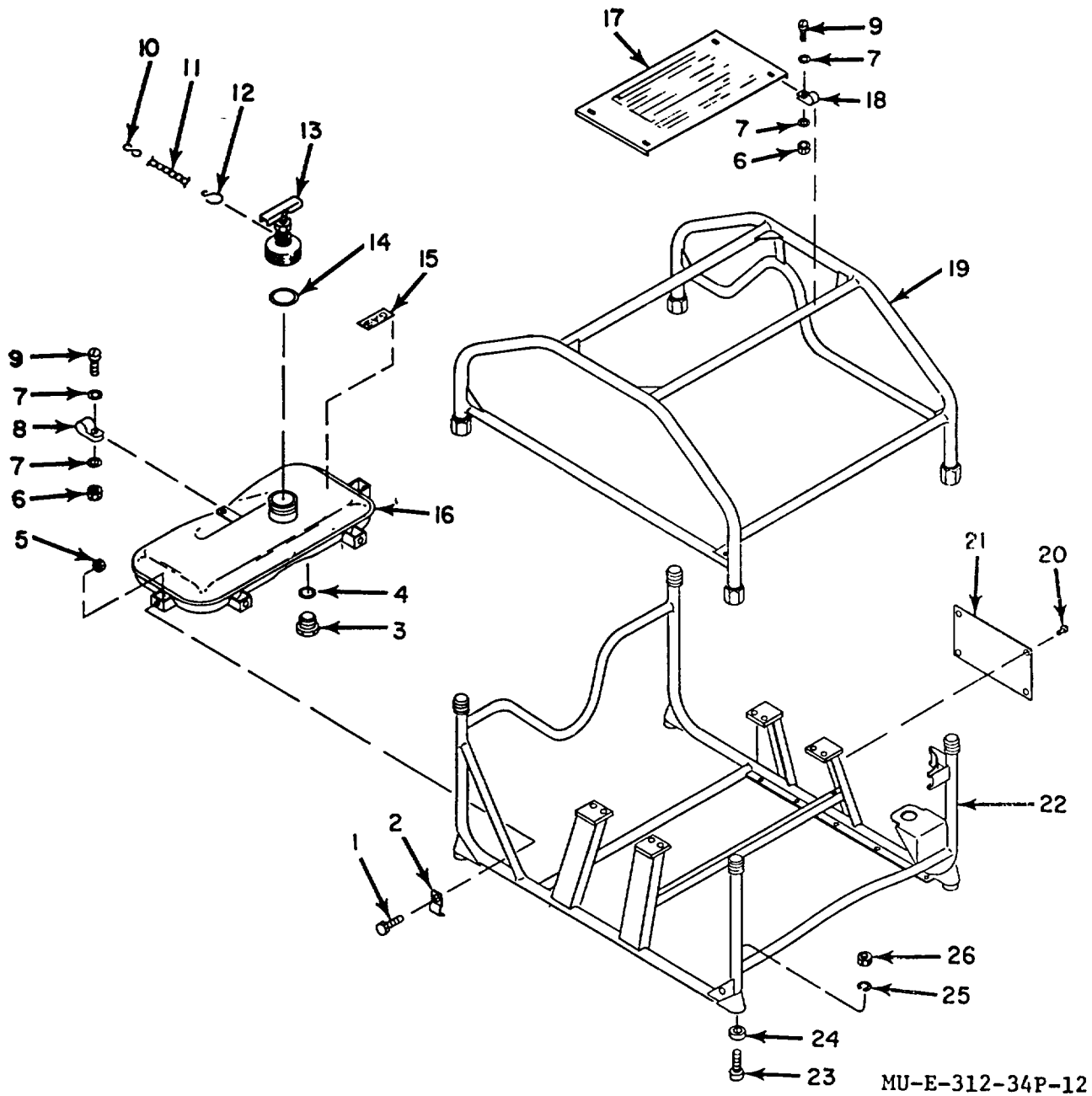
MU-E-312-34P-10

Figure 10. Keystone, crankshaft, oil sump, and crankcase.



MU-E-312-34P-11

Figure 11. Gasoline engine section.



MU-E-312-34P-12

Figure 12. Frame and fuel tank.

**Section IV INDEX - FEDERAL STOCK NUMBER AND REFERENCE NUMBER
CROSS-REFERENCE TO FIGURE AND ITEM NUMBER**

<u>Stock Number</u>	<u>Figure No.</u>	<u>Item No.</u>	<u>Stock Number</u>	<u>Figure No.</u>	<u>Item No.</u>
1040-021-3910	5	9	1040-403-5650	6	31
1040-062-8574	10	8	1040-403-5651	6	32
1040-083-2606	1	1	1040-408-2351	4	4
1040-083-2607	1	2	1040-408-2354	10	17
1040-083-2608	1	9	1040-408-2357	5	16
1040-083-2614	1	7	1040-408-2362	10	26
1040-083-2615	2	6	1040-408-2363	7	28
1040-083-2617	2	19	1040-408-2364	6	34
1040-084-0436	11	26	1040-408-2365	6	-
1040-084-0438	2	1	1040-408-2366	6	23
1040-151-4119	12	15	1040-408-2367	7	-
1040-169-0351	2	13	1040-408-2368	8	15
1040-169-0352	7	27	1040-408-2369	8	-
1040-237-8250	10	23	1040-408-2370	8	25
1040-403-0808	6	9	1040-408-2371	9	5
1040-403-4729	6	33	1040-408-2372	10	-
1040-403-5638	5	1	1040-408-2373	9	4
1040-403-5639	5	14	1040-408-2374	10	12
1040-403-5646	10	21	1040-408-2375	11	-
1040-403-5649	6	8	1040-482-8063	2	20
	7	1			
			1040-491-9539	5	8

**Section IV INDEX - FEDERAL STOCK NUMBER AND REFERENCE NUMBER
CROSS-REFERENCE TO FIGURE AND ITEM NUMBER**

<u>Stock Number</u>	<u>Figure No.</u>	<u>Item No.</u>	<u>Stock Number</u>	<u>Figure No.</u>	<u>Item No.</u>
1040-759-7352	13	7	2910-083-2620	2	2
1040-863-7451	1	4	2910-912-9485	12	16
1040-921-5291	12	19	2990-972-2318	11	6
1040-921-5298	12	22	2995-237-5653	10	2
1040-971-4920	11	1	3020-971-1365	10	7
1040-971-4921	11	3	3110-971-1366	11	8
1040-972-2323	3	-	4010-958-0633	12	11
1040-976-8980	12	13	4020-233-6555	1	8
1650-328-3730	6	11	4030-063-3979	12	12
	7	4	4030-956-6126	12	10
1650-337-5274	6	30			
			4310-340-1017	8	4
1650-348-2135	4	7			
			4310-400-1301	6	26
1650-507-5449	6	14			
	8	7	4310-421-1477	8	1
			4310-435-2405	7	2
1650-515-2095	5	2			
			4310-513-8259	6	19
1650-546-3426	7	9			
1650-547-0397	8	21	4310-605-0259	6	22
1650-561-5437	7	15	4720-289-2630	13	6
1650-953-0842	7	20	4730-084-0435	13	3
	8	11			
			4730-186-9961	7	14
1660-960-7688	6	5			
			4730-203-3132	2	5
2805-068-7510	11	11			
			4730-231-3026	2	7

**Section IV INDEX - FEDERAL STOCK NUMBER AND REFERENCE NUMBER
CROSS-REFERENCE TO FIGURE AND ITEM NUMBER**

<u>Stock Number</u>	<u>Figure No.</u>	<u>Item No.</u>	<u>Stock Number</u>	<u>Figure No.</u>	<u>Item No.</u>
4730-277-6372	2	8	5305-468-4280	5	13
4730-278-5006	5	10	5305-468-4291	8	9
4730-331-4950	8	2	5305-468-4293	7	21
4730-540-2577	11	15	5305-472-1537	10	15
4730-605-0281	6	20	5305-939-9190	11	7
4730-618-3410	13	5	5305-984-6209	5	5
4730-851-2278	13	8	5305-989-6265	11	31
4730-863-0774	13	9	5305-989-7435	12	9
4730-875-8263	5	11	5305-993-2459	12	23
4730-933-0723	13	2	5306-064-8407	11	2
4820-699-0522	8	16	5306-151-6947	4	6
4820-977-7664	2	11	5306-637-9691	11	24
5305-068-0500	11	5	5306-879-2800	1	3
5305-068-0507	12	1	5307-151-8900	6	16
5305-228-3927	5	4	5310-045-3299	7	16
5305-282-6228	4	1	5310-054-4892	10	25
5305-331-5256	7	22	5310-060-2039	6	6
	8	10		7	7
				8	6
5305-400-5720	6	10			
	7	3	5310-080-6004	4	5
	8	3			
			5310-167-0822	5	12
5305-405-2553	9	6			

**Section IV INDEX - FEDERAL STOCK NUMBER AND REFERENCE NUMBER
CROSS-REFERENCE TO FIGURE AND ITEM NUMBER**

<u>Stock Number</u>	<u>Figure No.</u>	<u>Item No.</u>	<u>Stock Number</u>	<u>Figure No.</u>	<u>Item No.</u>
5310-167-0834	5	7	5310-807-1474	6	12
	10	16			
			5310-809-8546	12	7
5310-167-0836	10	24			
			5310-833-2080	11	28
5310-168-2886	6	15			
			5310-877-5796	12	5
5310-168-2887	4	3			
			5310-880-5977	1	5
5310-194-0637	12	25			
			5310-902-6676	12	6
5310-208-5769	5	15			
			5310-934-9765	11	10
5310-209-0786	11	4			
			5310-982-4988	1	6
5310-275-3683	2	18		12	26
5310-282-7834	2	3	5310-999-0397	12	20
5310-285-7036	5	6	5330-081-3986	2	17
	8	8			
			5330-171-5099	2	16
5310-468-4290	6	13			
			5330-246-6403	2	9
5310-471-3072	5	3			
			5330-263-8030	11	27
5310-515-8059	4	2			
			5330-263-8031	12	4
5310-543-5933	11	9			
			5330-265-1075	12	14
5310-576-5752	11	29			
			5330-524-0730	10	14
5310-616-3056	2	4			
			5330-531-3021	7	10
5310-619-1044	3	7		8	18
5310-619-1148	6	17	5330-576-9925	10	18
5310-655-6054	7	5	5330-584-0150	10	22

**Section IV INDEX - FEDERAL STOCK NUMBER AND REFERENCE NUMBER
CROSS-REFERENCE TO FIGURE AND ITEM NUMBER**

<u>Stock Number</u>	<u>Figure No.</u>	<u>Item No.</u>	<u>Stock Number</u>	<u>Figure No.</u>	<u>Item No.</u>
5330-605-0280	6	21	5340-680-0559	6	18
5330-805-2966	13	1	5340-977-7247	12	24
5330-983-9840	2	10	5365-287-0094	10	19
	10	20			
			5365-289-3070	12	3
5340-079-7837	11	30			
			6685-087-6925	13	4
5340-282-8335	12	18			
			9905-436-7499	12	17
5340-565-0004	6	7			
	7	6			
	8	5			
5340-597-9408	12	8			

REFERENCE NUMBER	MFG CODE	FIG NO	ITEM NO
B68-13-1553	81361	13	3
B81-3-30	81361	13	5
B81-3-65	81361	13	6
B81-6-384	81361	13	8
C81-6-407	81361	13	7
MS28778-4	96906	13	1
MS51528-A4	96906	13	2
2A3F2	95138	13	9
A68-13-1523	81361	12	24
A81-1-882	81361	12	10
AN6289-4	88044	2	8
AN737-TW-98-114	88044	2	5
AN814-4D	88044	1	19
AN833-4	88044	2	7
AN833-4J	88044	5	11
AN911-1	88044	11	14
AN924-4	88044	5	15
AN924-10D	88044	2	3
AN929-4D	88044	5	10
AN960-10L	88044	5	7
		10	16
AN960-516L	88044	10	24
AN960-716	88044	5	12
AN960-8	88044	4	2
B68-13-1540	81361	11	1
B68-13-1541	81361	11	3
B68-13-1560	81361	12	13
B68-13-1563	81361	12	21
B68-13-1566	81361	11	26
B68-13-1567	81361	2	1
B68-13-1572	81361	11	6
B68-13-1577	81361	12	2
B81-1-526	81361	12	12
B81-1-6878	81361	1	3
D68-13-1532	81361	11	8
D68-13-1545	81361	2	6
D68-13-1551	81361	1	1
D68-13-1570	81361	1	7
D68-13-1586	81361	12	17
D81-1-6869-1	81361	1	2
D81-1-6872-1	81361	1	9
D81-1-6876	81361	1	4
E68-13-1585	81361	12	16
E68-13-1587	81361	12	19
E68-13-4596	81361	12	22
MIL-C-2533A	81349	1	8
MIL-C-271	81349	12	11
MIL-R-24243-1	81349	12	20
MS122055	96906	5	6
		8	8
		10	10
MS122058	96906	11	23
MS15795-808	96906	6	17
MS15795-811	96906	1	5
MS20822-4C	96906	8	2
MS20822-4D	96906	7	14
MS20955C32	96906	3	15
		11	2
MS21042-L3	96906	6	12
MS21044D08	96906	6	6
		7	7
		8	6
MS21044-N4	96906	12	5
MS21045-C4	96906	1	6
		12	26
MS21083N3	96906	12	6
MS21318-7	96906	5	19
MS21333-67	96906	11	30
MS21919DG-10	96906	6	7
		7	6
		8	5

REFERENCE NUMBER	MFG CODE	FIG NO	ITEM NO
MS21919-F10	96906	12	8
MS21919-F8	96906	12	18
MS21678-11	96906	10	9
MS27183-8	96906	12	7
MS27183-14	96906	4	5
MS28773-04	96906	2	9
MS28783-6	96906	2	16
MS29512-06	96906	11	27
MS29512-08	96906	12	4
MS29513-218	96906	12	14
MS35206-262	96906	5	5
MS35207-262	96906	11	31
MS35207-264	96906	12	9
MS35207-23	96906	13	23
MS35275-265	96906	11	7
MS35333-39	96906	11	29
MS35333-73	96906	12	9
MS35335-33	96906	11	4
MS35335-40	96906	2	18
MS35335-41	96906	2	4
MS35338-42	96906	7	16
MS35650-302	96906	11	28
MS35650-304	96906	11	10
MS35650-3312	96906	10	25
MS9015-08	96906	12	3
MS907253	96906	11	5
MS90726-7	96906	12	1
MS9135-01	96906	10	2
MS9320-10	96906	12	25
1A08-3	97403	11	11
1264-2124	33525	11	24
1563-0808	33525	4	1
1563-0810	33525	6	10
		7	3
		8	3
1611208PC17	10001	11	2
17309	33525	6	8
		7	1
1818-0203	33525	2	14
203644	33525	6	24
203645	33525	6	25
203646	33525	6	28
204033	33525	6	22
204066	33525	6	19
204067	33525	6	18
204068	33525	6	21
204070	33525	6	20
204728	33525	5	2
206507	33525	7	22
		8	10
206508	33525	7	10
		8	18
206511	33525	7	13
		8	17
206512	33525	8	24
206519	33525	7	29
206524	33525	7	8
206540	33525	6	30
206869	33525	8	4
206871	33525	7	4
		6	11
206889	33525	7	5
206898	33525	5	4
207799	33525	6	14
		8	7
208287	33525	3	13
208289	33525	3	1
208290	33525	3	10
208292	33525	3	7
208298	33515	3	2

REFERENCE NUMBER	MFG CODE	FIG NO	ITEM NO
21-25 DFM 1-4 CBM 3000	38508	13	4
209921	33525	6	27
209922	33525	6	29
209923	33525	7	12
		8	19
211730	33525	3	11
211793	33525	3	14
211958	33525	8	22
213072	33525	6	9
213299	33525	11	21
213347	33525	2	2
218033	33525	5	18
241054	33525	7	30
241055	33525	7	9
241056	33525	8	21
241057	33525	9	1
241898	33525	7	11
		8	20
242842	33525	7	20
		8	11
244342	33525	5	8
244719	33525	3	3
244724	33525	3	5
244752	33525	3	9
245734	33525	10	7
247317	33525	5	3
247661	33525	3	8
254917	33525	8	23
254956	33525	7	17
		8	14
254957	33525	7	18
		8	13
254958	33525	7	19
		8	12
254994	33525	9	3
254995	33525	9	2
255059	33525	7	24
		8	20
255060	33525	7	25
255061	33525	7	26
255062	33525	8	28
255063	33525	8	27
255064	33525	8	26
255067	33525	10	26
255078	33525	6	3
255079	33525	6	2
255080	33525	6	1
255146	33525	6	31
255147	33525	6	32
255148	33525	6	33
255200	33525	9	6
255386	33525	10	11
256645	33525	10	3
256661	33525	11	17
256662	33525	11	18
256663	33525	11	19
256664	33525	11	20
256678	33525	10	6
256680	33525	10	5
256728	33525	5	14
256776	33525	2	15
256936	33525	11	13
257010	33525	4	3

REFERENCE NUMBER	MFG CODE	FIG NO	ITEM NO
257051	33525	4	6
257106	33525	6	16
270558	33525	7	15
272277	33525	2	19
277941	33525	9	4
277976	33525	10	23
279768	33525	8	15
279801	33525	11	22
279803	33525	4	4
279804	33525	11	16
279805	33525	2	20
279806	33525	2	13
279949	33525	10	1
279950	33525	12	15
292129	33525	10	21
292167	33525	7	28
292190	33525	6	34
292586	33525	9	3
292596	33525	10	12
292680	33525	6	21
31515	33525	3	4
500592	33525	11	15
5046-1100	10001	6	15
5302-0100	33525	3	6
5302-0900	33525	13	12
5303-0500	33525	10	11
5303-0600	33525	2	17
5303-1000	33525	6	4
5301-0100	33525	2	10
		10	20
5301-0500	33525	10	a22
5301-0600	33525	10	14
5359-0117	33525	8	28
5359-0124	33525	7	23
5359-0146	33525	10	4
5386-0001	33525	6	13
5833-0832	33525	7	21
5833-1012	33525	10	15
5833-1110	33525	5	13
5833-1132	33525	8	9
801187	33525	1	7
802259	33525	8	16
803842	33525	3	-
804971	33525	6	-
804972	33525	7	-
804973	33525	8	-
804974	33525	10	-
084975	33525	11	-
842311	33525	10	8
843895	33525	6	26
873481	33525	6	5
873482	33525	7	2
873483	33525	8	1
873738-2550	33525	2	11
876071	33525	10	17
876959	33525	8	25
876960	33525	7	27
895459	33525	5	17
895466	33525	10	13
895476	33525	5	16
895477	33525	5	1
896158	33525	5	9

By Order of the Secretary of the Army:

Official:

W. C. WESTMORELAND,
General, United States Army,
Chief of Staff.

VERNE L. BOWERS,
Major General, United States Army,
The Adjutant General.

Distribution:

To be distributed in accordance with DA Form 12-28 (qty rqr block No. 69) operator maintenance requirements for maintenance equipment.

TM 3-1040-263-34P

PIN: 024692-002